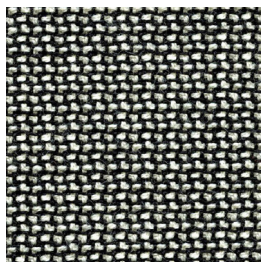


TONIC 10200

unika vaev
INSTYLE

Bringing Design to Life

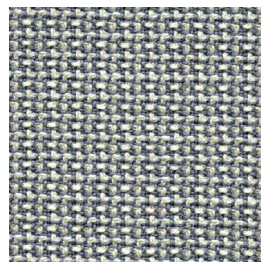
TONIC 10200



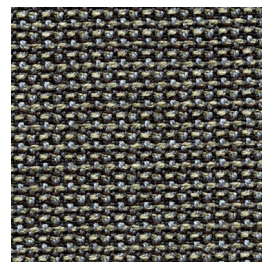
/100 FIX



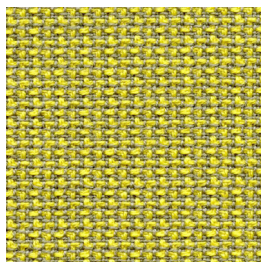
/115 REAL



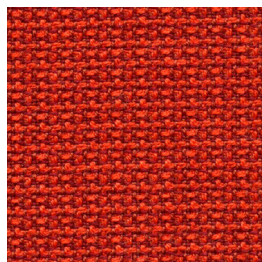
/120 CLEAR



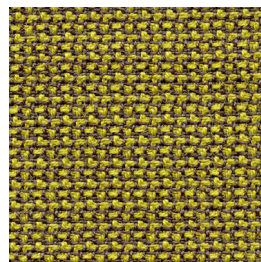
/125 BOOST



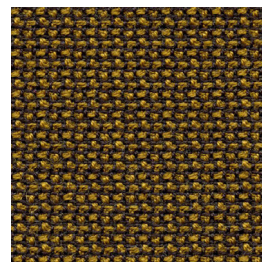
/130 PLUS LEMON



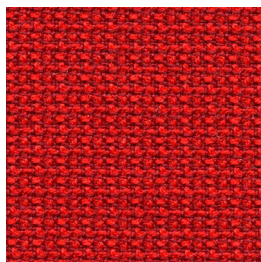
/135 LAUGHTER



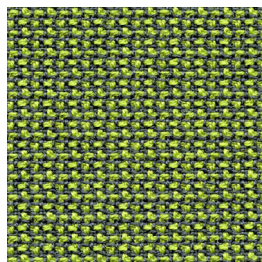
/140 AND GIN



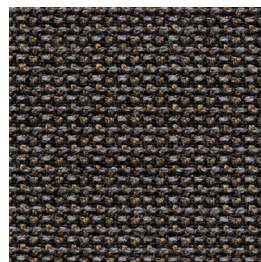
/145 SOUND



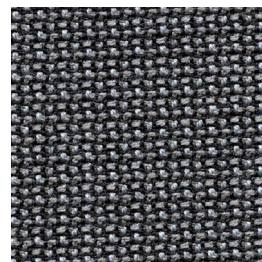
/150 STRAIGHT UP



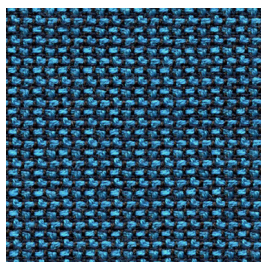
/155 BITTERS



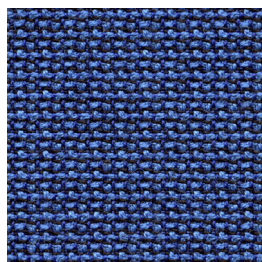
/160 WELCOME



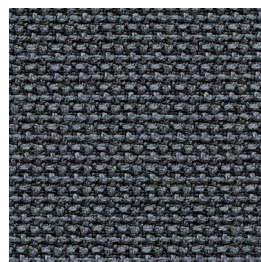
/165 BEST



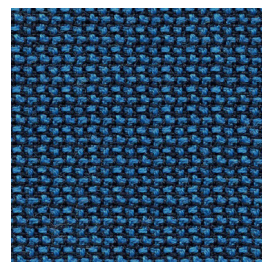
/170 SPRAY



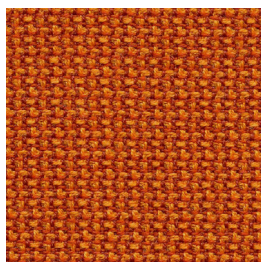
/175 WATER



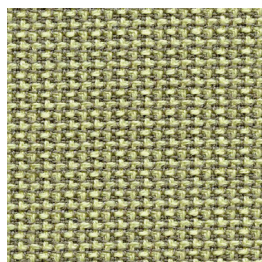
/181 DECANTER



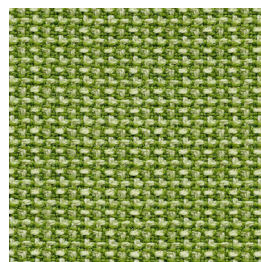
/182 EXCITE



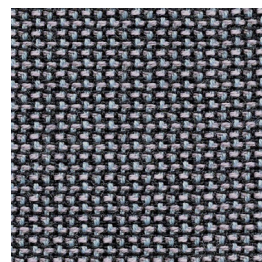
185 FRESH



/186 JUST THE



/187 LIME

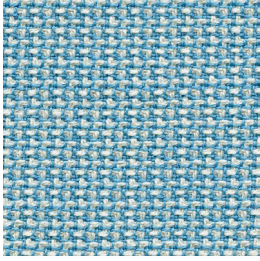


/188 MIX

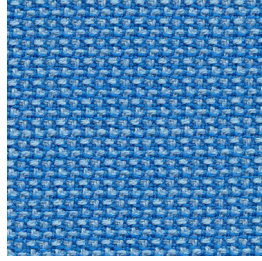
Patterns shown are not to scale
Product may vary in color due to the nature of the media
Please refer to website for current color range

unika vaev
INSTYLE

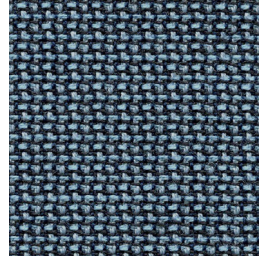
TONIC 10200



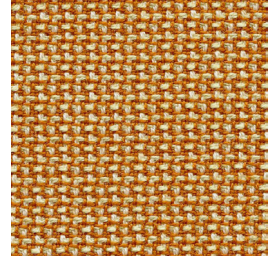
/189 OASIS



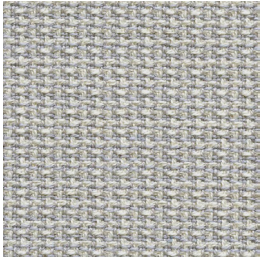
/190 PICK ME UP



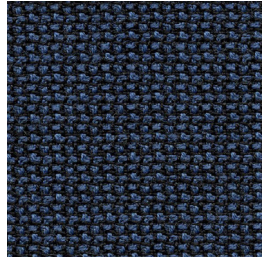
/191 SHAKEN



/192 SUPER



/193 TIMELY



/194 VODKA

Patterns shown are not to scale
Product may vary in color due to the nature of the media
Please refer to website for current color range

unika vaev
INSTYLE

TONIC 10200



CONTENT 100% Worsted EthEco® Wool

WIDTH / WEIGHT 54" / 12.39 Oz Linear Yard

REPEAT All Over

FINISH None

DURABILITY  54,500 Martindale Cycles

PERFORMANCE    
Meets all ACT standards

SEAM SLIPPAGE
ASTM D4034-92

PILLING
ASTM D3511

LIGHTFASTNESS
ASTM D3511

FLAMMABILITY
ASTM E84-Unadhered
Cal Bulletin 117E
NFPA 260 UFAC
AS/NZS 1530.3 & 3837
IMO A.652(16)8.2 & 8.3
ISO 5660.1

APPLICATION Multipurpose, Upholstery,
Vertical Surfaces

CLEANING CODE S - Spot clean using a mild
water-free solvent, or dry
cleaning product. Clean only
in a well ventilated room and
avoid any product containing
Carbon Tetrachloride or other
toxic materials.

GREEN STAR: TONIC contributes points to the following

- Stewardship Programs: TONIC can be reused or recycled through our Revive recycling program
- Low-VOC
- TONIC can be used on white furniture certified to Ecospecifier, AFRDI, ECNZ and GECA
- The Green Star Rating Tool states "Where at least 90% of an item's mass is certified to a GBCA recognized standard, the item can be entered as a certified product at Level A, B or C." Therefore any fabric can be used as fabrics are almost always under 10% by weight of a furniture item

LEED: TONIC contributes points to the following criteria:

- Bio-Based + Rapidly-Renewable Content (100%)
- Low-VOC
- Extended Producer Responsibility Recycling Program

WELL: TONIC can contribute to the following criteria:

- Low VOC / VOC Reduction: TONIC is low VOC
- Toxic Material Reduction: TONIC is free of PFCs,

ENVIRONMENT

- Rapidly Renewable Content
- Recycled Content
- PVC Free
- Prop 65 Compliant
- No FR Additives
- No Conflict Minerals
- Red List Compliant
- Low VOC
- HPD

