

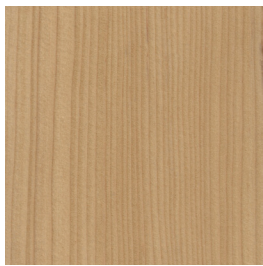
ECOUSTIC® TIMBER CEILING BLADE



unika vaev
INSTYLE

Hear yourself think®

ECOUSTIC® TIMBER CEILING BLADE FINISHES



HEMLOCK Clear



HEMLOCK White Wash



HEMLOCK Walnut



HEMLOCK Espresso



HEMLOCK Hickory



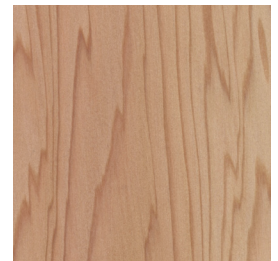
HEMLOCK Shale



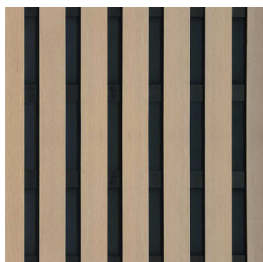
SPOTTED GUM Clear*



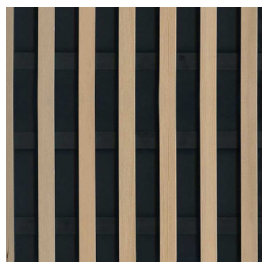
WESTERN RED CEDAR Clear*
(3 common shades)



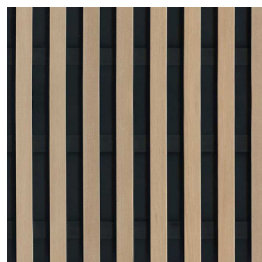
ECOUSTIC® TIMBER CEILING BLADE PROFILES



1830-13



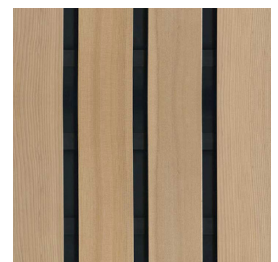
3018-14



3018-17



3060-7



3060-8



* Custom Stains are available for a 10 box minimum with no upcharge

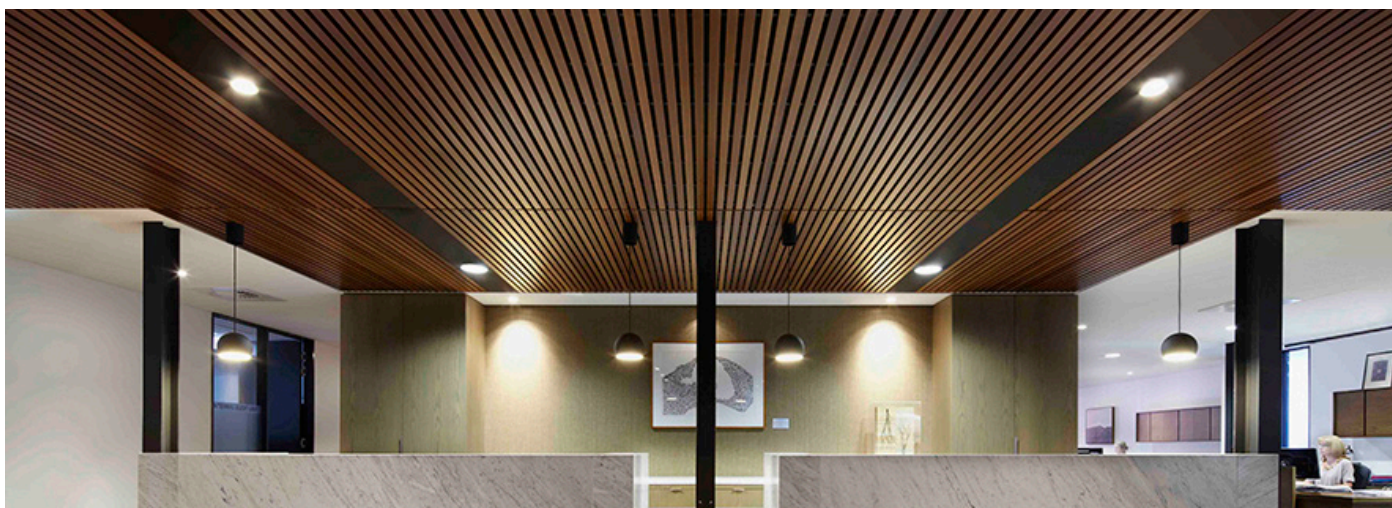
** Some finishes are not available in selected profiles

Wood grain and color may vary due to the nature of the media

Product not to scale

ecoustic® global leaders
by INSTYLE in acoustic
products

ECOUSTIC® TIMBER CEILING BLADE



DESCRIPTION Ecoustic® Timber Ceiling Blade is an acoustic modular ceiling tile combining superior sound absorption with the elegance of PEFC-certified solid wood, available in five profile options. When installed, the tiles disguise the ceiling grid giving the appearance of a continuous linear ceiling system.

CONTENT 100% PEFC-certified wood & acoustic scrim

DIMENSIONS Available in two standard tile sizes:
 23 5/8" x 23 5/8" or 47 1/4" x 23 5/8"
 (600mm x 600mm or 1200mm x 600mm)

APPLICATION Ceiling

FIRE RATINGS
 ASTM E84 Class B
 AS/NZS 3837 Group 3

ACOUSTIC
 AS/ISO 354 using 16" Air Gap
 NRC range: 0.40 - 0.55 (without infill)
 NRC range: 0.65 - 0.85 (with infill)

- 1830-13: NRC 0.50 | with Infill NRC 0.80
- 3018-14: NRC 0.50 | with Infill NRC 0.80
- 3018-17: NRC 0.55 | with Infill NRC 0.85
- 3060-7: NRC 0.50 | with Infill NRC 0.75
- 3060-8: NRC 0.40 | with Infill NRC 0.65

*Please see graphs on following page

PLEASE NOTE It is the responsibility of site installation managers to confirm compatibility between the ceiling grid system specified and the dimensions of Ecoustic® ceiling tiles prior to placement of purchase order. Custom sized Ecoustic® ceiling tiles can be produced, however, conditions do apply. Please contact Unika Vaev customer service or your local sales representative for more information.

Drop Ceiling Specification: Ecoustic® Timber Ceiling Blade Tiles fit standard ceiling tile grids 9/16" (15mm) or 15/16" (24mm) exposed tee grid systems in slim and standard profiles.

Acoustic: All Ecoustic® Timber Ceiling Blade Tiles are supplied with an acoustic scrim fabric. The combination of the Tile Blades with the acoustic scrim fabric achieves an NRC of up to 0.55, and has been specifically designed to complement the full range of Ecoustic® Timber Ceiling Blade systems. Timber Ceiling Blade Tiles achieve an NRC of 0.85 with the inclusion of Ecoustic® Infill. To further enhance sound-absorption a .98" Ecoustic® core panel may be installed behind each tile.

Additional Benefits:

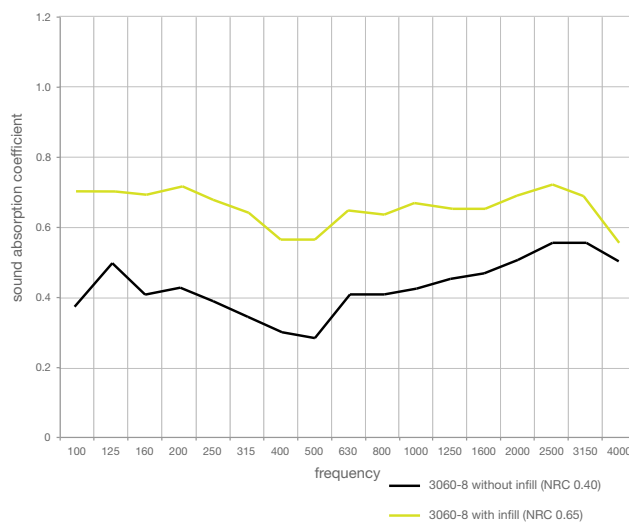
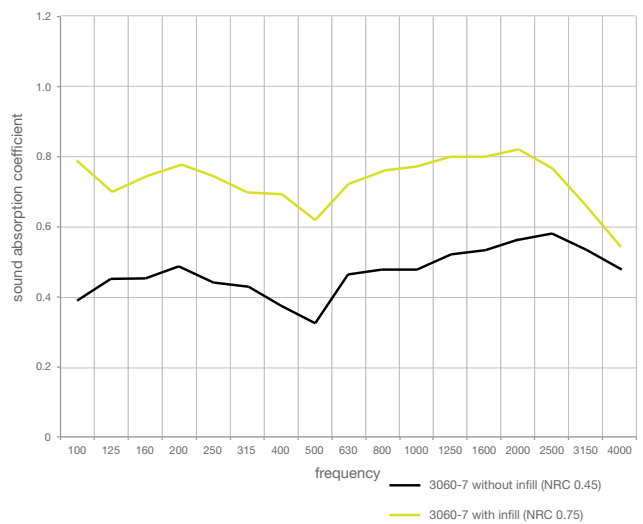
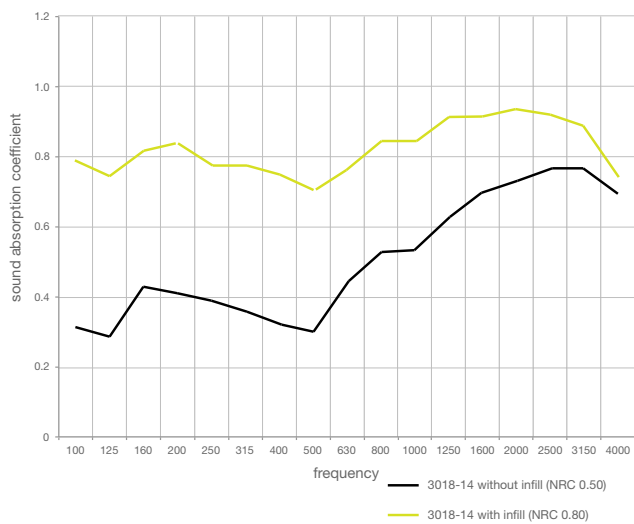
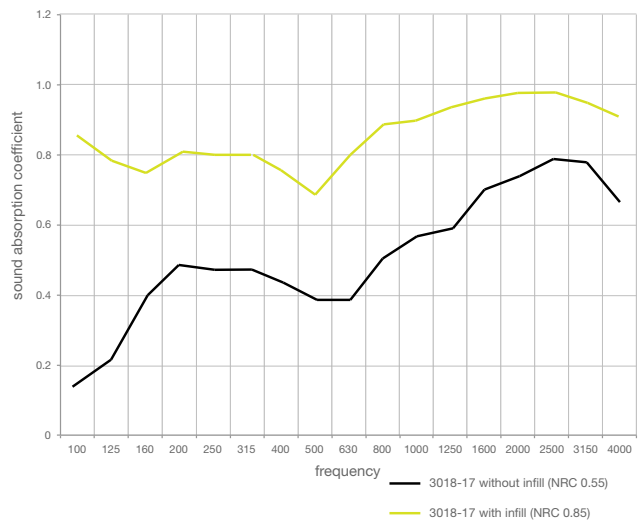
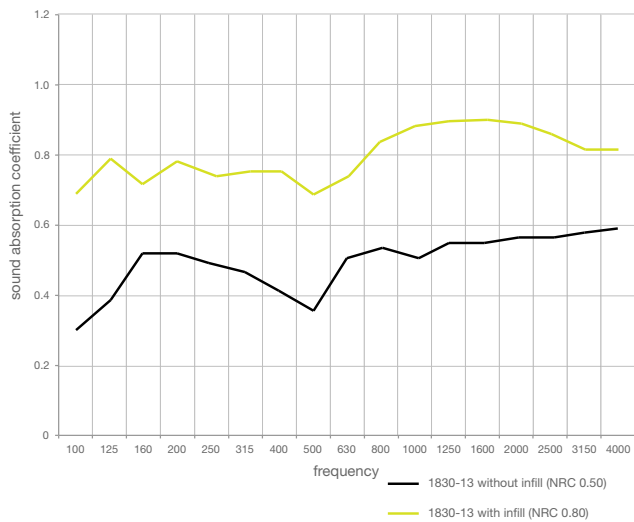
- There are 5 different Blade Ceiling Tile profiles and blade spacing options.
- Simple and efficient installation process requiring minimal on-site installation labor.
- Tiles and Panels can be installed easily into existing grids.
- Installed Tiles and Panels can be easily removed.
- Ceiling tiles incorporate an elegant ceiling grid reveal which compliments the blade orientation.
- The 23 5/8" x 23 5/8" ceiling tiles may be arranged in a linear or checker board orientation.
- The 3018-14 Ceiling Tiles align with 3018-7 Panels, and 3060-8 Ceiling Tiles align with 3060-4 Panels, providing potential horizontal to vertical blade alignment in ceiling to wall installations.
- 23 5/8" x 23 5/8" tiles: (8) tiles per box
 47 1/4" x 23 5/8" tiles: (4) tiles per box

Designed for the Environment:

- PEFC Certified Wood
- Low VOC
- Prop 65 Compliant
- No FR Additives
- No Conflict Minerals



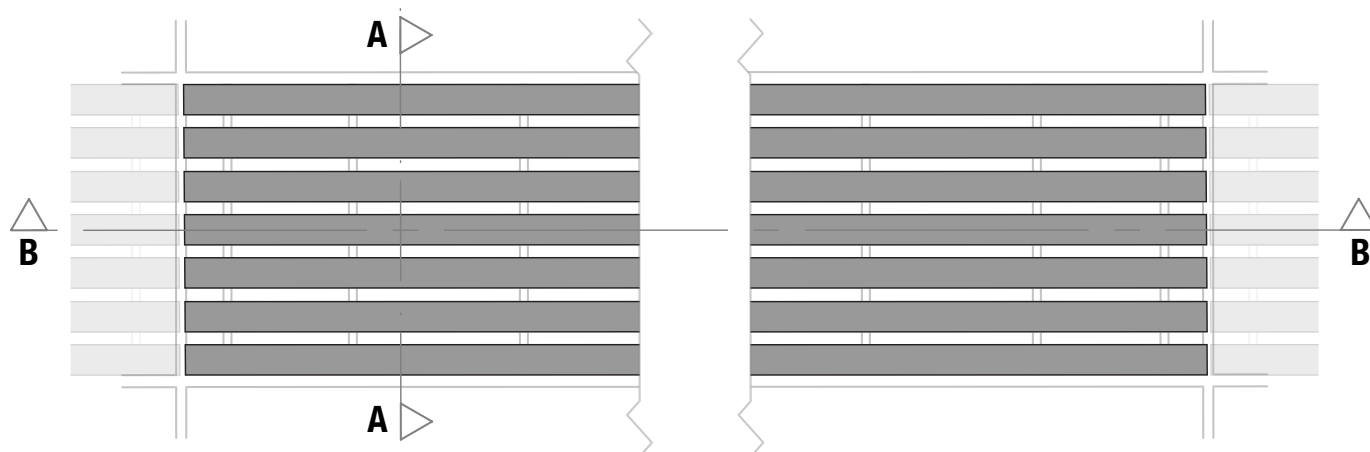
ECOUSTIC® TIMBER CEILING BLADE - ACOUSTIC



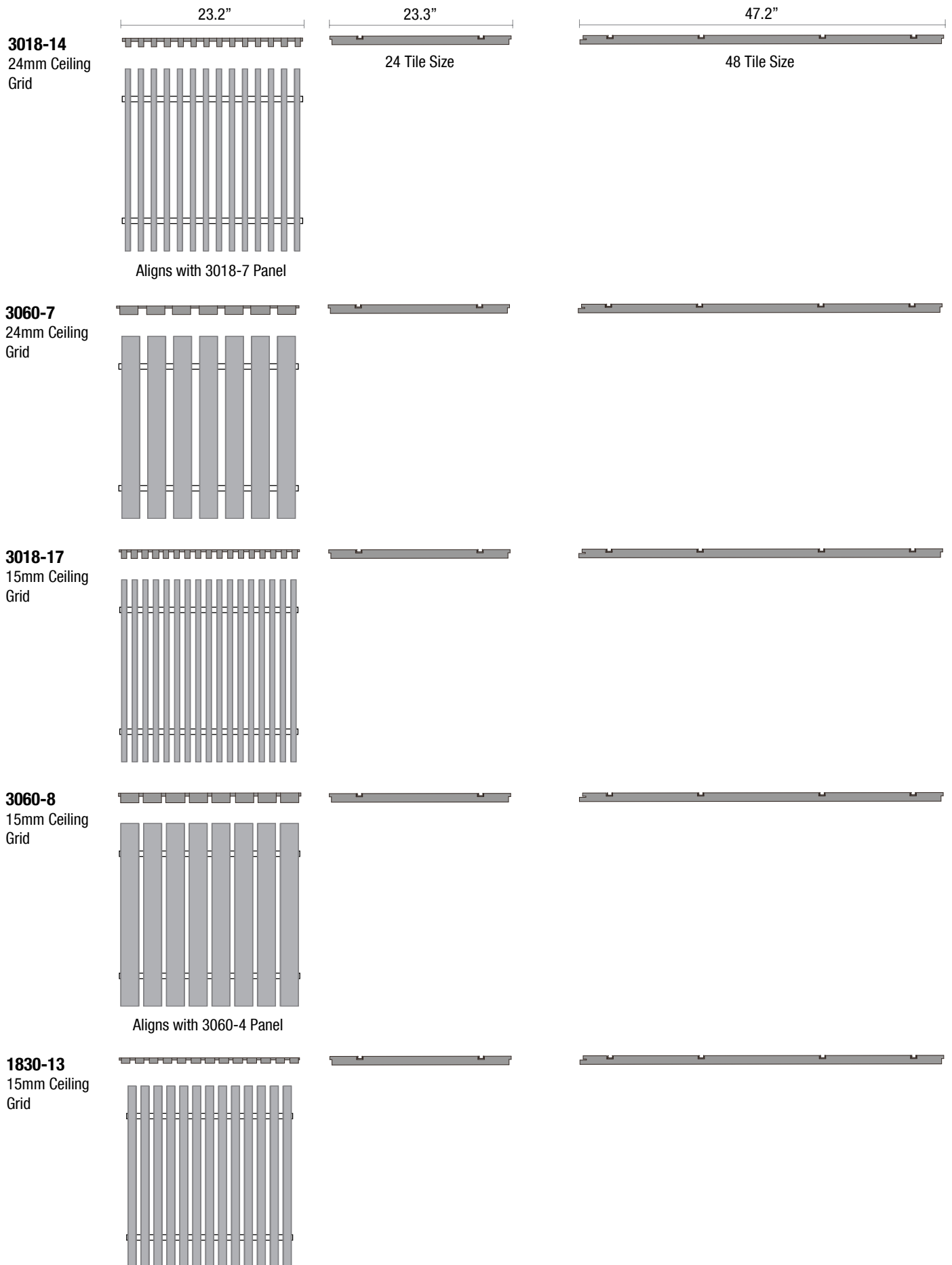
DIMENSIONS - BLADE SIZES - QUANTITIES - WEIGHTS

DESIGN	3018-14	3060-7	3018-17	3060-8	1830-13
Blade Depth (inches)	1.18"	1.18"	1.18"	1.18"	0.71"
Blade Thickness (inches)	0.71"	2.36"	0.71"	2.36"	1.18"
Blades Per Tile	14	7	17	8	13
Grid Size	24mm	24mm	15mm	15mm	15mm
Weight (Lbs per tile)	24" x 24" Ceiling Tiles				
Hemlock	5.5 lbs	8.8 lbs	6.6 lbs	10.5 lbs	5.5 lbs
Spotted Gum	11.6 lbs	N/A	14.4 lbs	N/A	11 lbs
Western Red Cedar	4.4 lbs	6.6 lbs	5 lbs	7.2 lbs	3.9 lbs
QTY Per Box	8	8	8	8	8
Hemlock Stain Box Minimums	8	6	7	5	9
Weight (Lbs per tile)	48" x 24" Ceiling Tiles				
Hemlock	11 lbs	17.6 lbs	13.2 lbs	21 lbs	11 lbs
Spotted Gum	24.25 lbs	N/A	28.6 lbs	N/A	22 lbs
Western Red Cedar	8.8 lbs	13.2 lbs	9.9 lbs	14.3 lbs	7.7 lbs
QTY Per Box	4	4	4	4	4
Hemlock Stain Box Minimums	8	6	7	5	9

Plan View



SECTIONAL RENDERINGS

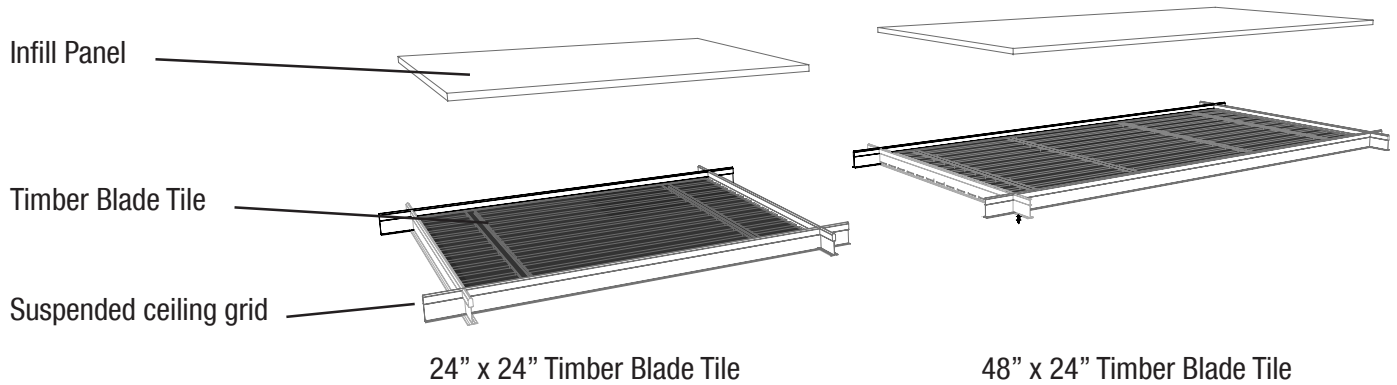


ECOUSTIC® TIMBER CEILING BLADE

ecoustic® Infill Assembly Instructions

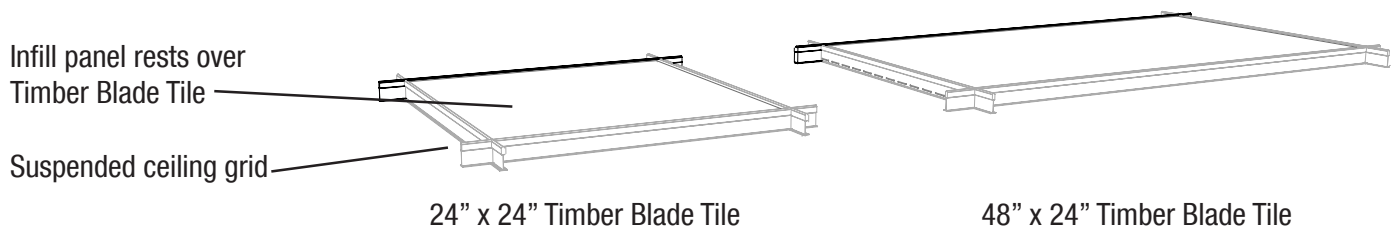
Step 1

Rest Timber Blade Tile within suspended ceiling grid



Step 2

Use access from adjoining ceiling grid open area to place Infill panels over the previously installed Timber Blade Tiles.



Step 3

Rest Infill panels over Timber Blade Tile, ensuring the Infill is located within suspended ceiling grid T bars.
Please note: Hold or secure Infill panel to Timber Blade Tile to be installed within a ceiling space.