

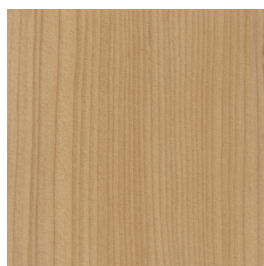
# ECOUSTIC® TIMBER BLADE PANEL



**unika vaev**  
INSTYLE

Hear yourself think®

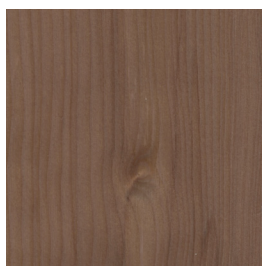
## ECOUSTIC® TIMBER BLADE PANEL FINISHES



HEMLOCK Clear



HEMLOCK White Wash



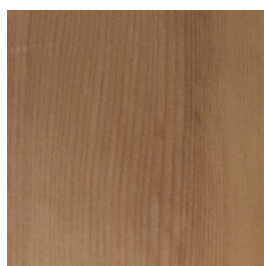
HEMLOCK Walnut



HEMLOCK Espresso



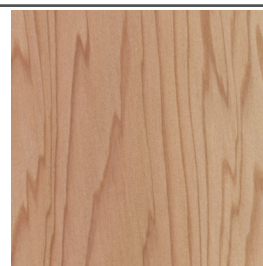
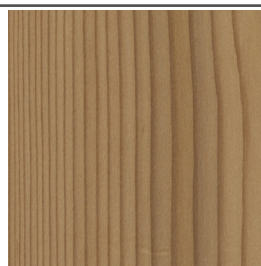
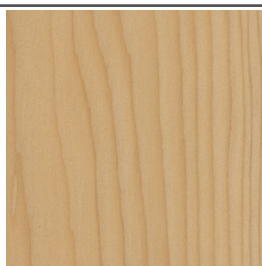
HEMLOCK Hickory



HEMLOCK Shale



SPOTTED GUM Clear\*



WESTERN RED CEDAR Clear\*  
(3 common shades)

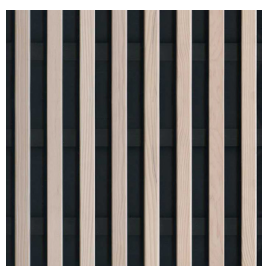
## ECOUSTIC® TIMBER BLADE PANEL PROFILES



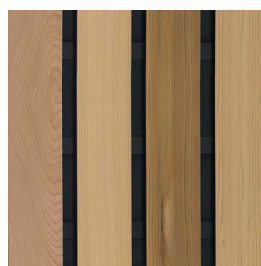
1830-7



3018-7



3018-9



3060-4



\* Custom Stains are available for a 10 box minimum with no upcharge

\* Some finishes are not available in selected profiles

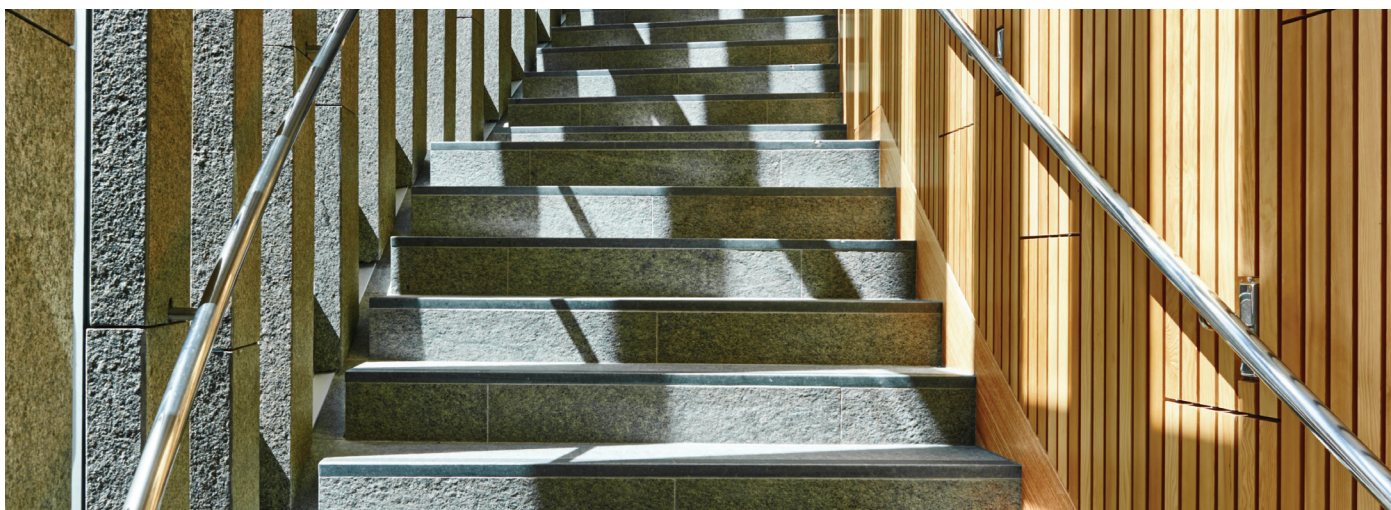
\* Wood grain and color may vary due to the nature of the media

\* Product not to scale

**ecoustic**® global leaders  
by INSTYLE in acoustic  
products



# ECOUSTIC® TIMBER BLADE PANELS



<b>CONTENT</b>	100% PEFC-certified wood & acoustic scrim
<b>DIMENSIONS</b>	12" (W) x 106.3" (L) (305 x 2700mm)
<b>WEIGHTS</b>	Please refer to the folloing page
<b>APPLICATION</b>	Wall / Ceiling
<b>FIRE RATINGS</b>	
ASTM E84	Class B
AS/NZS 3837	Group 3
<b>ORIGIN</b>	Australia
<b>ACOUSTIC</b>	Timber Wall Panels on their own do not have a NRC value. The inclusion of a 0.47" Ecoustic® core backing will provide sound-absorbtion.
<b>VOC</b>	
ASTM D5116	Complies
<b>DESCRIPTION</b>	Ecoustic® Timber Blade are modular panels combining sound absorption with the elegance of PEFC-certified wood. Ecoustic® Timber Blade are manufactured in either Hemlock (clear, white wash, walnut or espresso), Western Red Cedar (natural), or Spotted Gum (clear). The wall blade dimensions are 12" x 106.3" and incorporate a black acoustic scrim backing. To provide additional sound absorption, the panels may be backed with black 0.47" thick Ecoustic® panel. Ecoustic® Timber Blade Panels may also be installed to cover ceilings.

## Designed for the Environment:

- No FR Additives
- PEFC certified wood
- Low-VOC certified

**Versatile:** Available in four profile options, Timber Blade Panels can be installed in horizontal or vertical orientation on walls and ceilings. 3018-7 panels align with 3018-14 ceiling tiles, 3060-4 panels align with 3060-8 ceiling tiles providing potential horizontal to vertical blade alignment in ceiling to wall installations.

**Ideal for New + Existing Construction:** Ecoustic® Timber Blade is ideal for any interior space to maximize sound absorption in ceiling and wall applications.

**Designed for the Environment:** Low VOC + PEFC-certified solid wood, sourced from sustainably-managed forests, Ecoustic® Timber Blade Panel has an advantage over veneered MDF alternatives that may contain formaldehyde or other VOCs Ecoustic® Infill is made from <60% post-consumer PET packaging

**Easy to Install:** Designed for modularity, Timber Blade Panel is pre-finished for simple efficient installation and ease of maintenance. A linear wood finish is achieved with minimal onsite labor for installation.

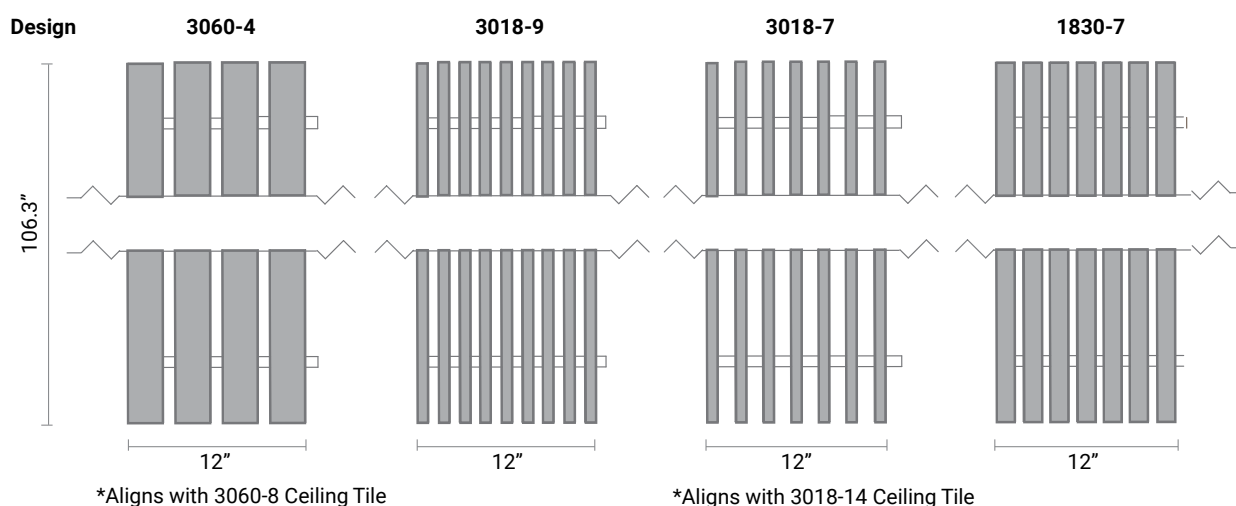
**Building Rating Systems:** Blade will contribute the following points for Green Star, LEED + WELL building standards.

Criteria	Green Star	LEED	WELL
Low VOC	✓	✓	✓
3rd Party Certification	-	-	-
Toxic Material Reduction	N/A	N/A	✓

# ECOUSTIC® TIMBER BLADE PANELS

DESIGN	3018-7	3018-9	3060-4	1830-7
Blade Depth (inches)	1.18"	1.18"	1.18"	0.71"
Blade Thickness (inches)	0.71"	0.71"	2.36"	1.18"
Blades Per Tile	7	9	4	7
Product Code	3018-7	3018-9	3060-4	1830-7
Finishes	Weight (Lbs per tile) 106" x 12" Panel			
Hemlock White Wash	12.3 lbs	15.7 lbs	22.5 lbs	12.3 lbs
Hemlock Espresso	12.3 lbs	15.7 lbs	22.5 lbs	12.3 lbs
Hemlock Clear	12.3 lbs	15.7 lbs	22.5 lbs	12.3 lbs
Hemlock Walnut	12.3 lbs	15.7 lbs	22.5 lbs	12.3 lbs
Hemlock Hickory	12.3 lbs	15.7 lbs	22.5 lbs	12.3 lbs
Hemlock Shale	12.3 lbs	15.7 lbs	22.5 lbs	12.3 lbs
Spotted Gum Clear	25.4 lbs	31.75 lbs	N/A	24.7 lbs
Western Red Cedar Clear	8.8 lbs	10.1 lbs	16.1 lbs	8.8 lbs
QTY Per Box	4	4	4	4
Hemlock Stain Box Minimums	7	6	5	7

## Front View



## End View

