

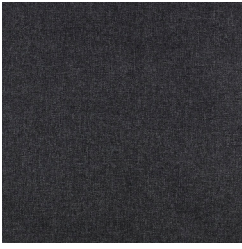
STITCH SCREEN



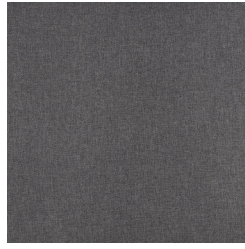
unika vaev
abstracta

Hear yourself think®

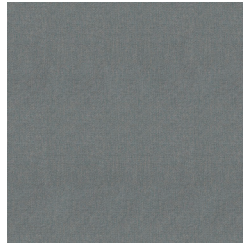
STITCH SCREEN COLORS



32 Dark Grey



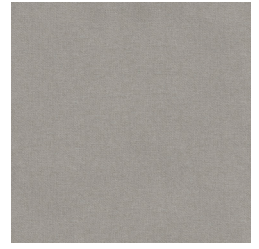
36 Middle Grey



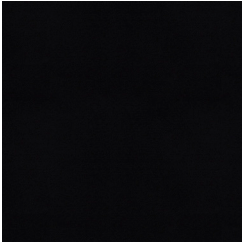
55 Light Green



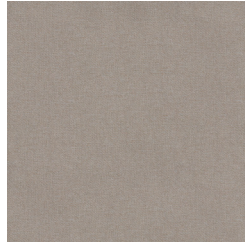
57 Beige



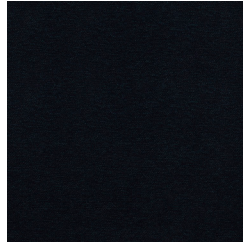
58 Light Grey



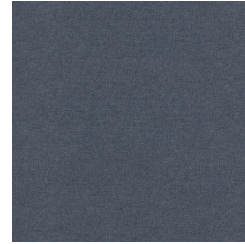
59 Black



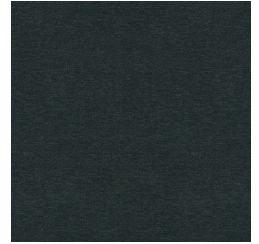
60 Light Beige



61 Dark Blue



62 Light Blue

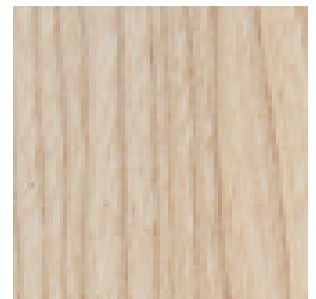
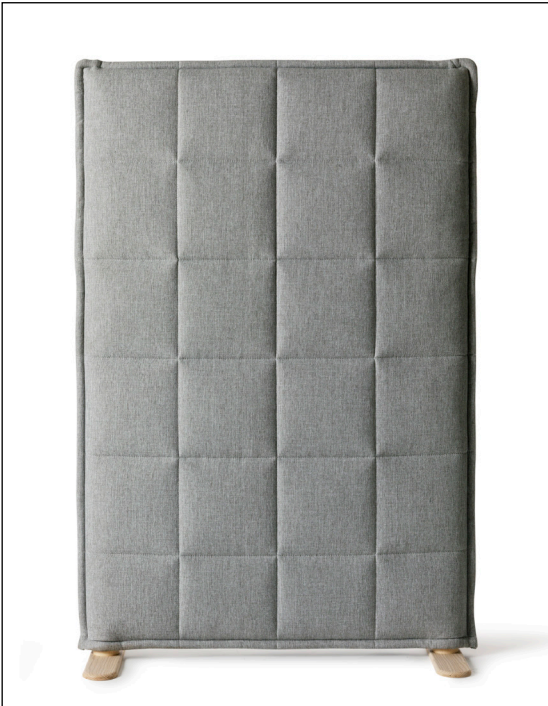


63 Dark Green

STITCH SCREEN BASE

Legs

Available in natural ash lacquer finish. Leg sets consist of two T-legs. For connecting more than one screen a 'peg' leg and two connectors are supplied.



Natural Lacquered Ash

Lead times are contingent on color/finish availability
Product may vary in color due to the nature of the media
Please refer to website for current color range + larger sample swatch

unika vaev
abstracta

STITCH SCREEN



DESIGNER

Stefan Borselius

CONTENT

Core: 100% Mineral Wool
Frame: 100% Natural Ash
Base: 100% Lacquered Natural Ash
Cover: Salsa- 100% Polyester

DIMENSIONS

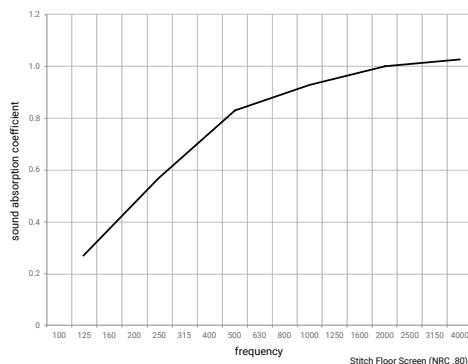
(w) 31.8" x (h) 60.6" x (d) 3.3"
(w) 41.7" x (h) 60.6" x (d) 3.3"
(w) 51.5" x (h) 60.6" x (d) 3.3"
T Legs: (w) 16.9" x (h) 2"

FLAMMABILITY

Inquire

ACOUSTIC

NRC: 0.80



APPLICATION

Screen

DESCRIPTION

Stitch screens combine a thick lined fabric with an embroidered check pattern to produce a sense of expressive softness to any space. Ash legs complement the floor screen design and provide stability. Stitch was developed with public spaces in mind but its soft design works equally well to create partitions and acoustic value in the office or home.

Improved Sound Absorption: Stitch Screen is ideal for high frequency absorption and achieves an NRC 0.80 rating. The thickness and structure of Stitch, with its embroidered 'quilt-like' check patterns, make an excellent sound absorber.

Recyclable: The materials in Stitch Screens are recyclable, either as material recycling or energy recovery.

Basic Care: To maintain the color and appearance of the fabric covering it should be vacuum cleaned regularly with a clean, soft, brush nozzle.

Polyester Stain Removal:

- Use colorless towel or a washcloth to absorb as much as possible of still-moist stain. Dried stains should be vacuumed.
- Wet the stain sparingly with a white pure cotton cloth, warm water and possibly a little pH-neutral cleaner.
- Dab the area with a dry cloth or colorless paper towel to absorb the moisture and stain.
- Repeat this process until the stain is gone.
- On the final repetition, use only clean water with no detergent added.
- Finish by dabbing

Designed for the Environment:

- Rapidly Renewable Content
- FSC Certified Wood
- Red list Compliant
- No FR Additives
- No Conflict Minerals

