

LINK 716

unika vaev

INSTYLE

Bringing Design to Life

LINK COLOR



/10 ALLIANCE



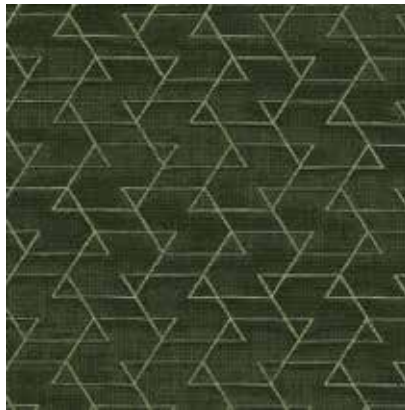
/35 HIDDEN



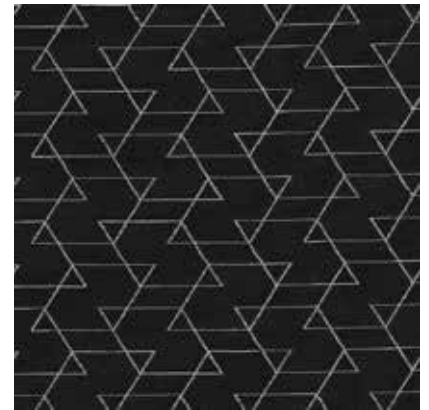
/40 UNITE



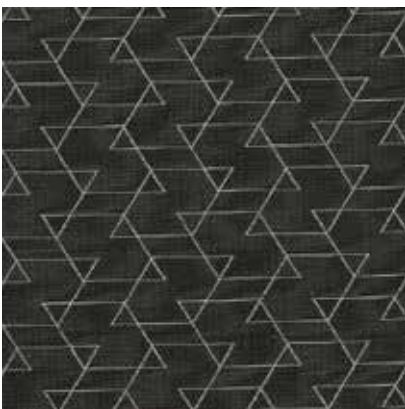
/52 MOVE



/65 TRAVERSE



/80 FIXED



/81 NETWORK







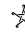
/96 PERFECT

Patterns shown are not to scale
Product may vary in color due to the nature of the media
Please refer to website for current color range

unika vaev
INSTYLE

LINK 716



CONTENT	57% Cotton 43% Polyester
WIDTH WEIGHT	54" 15.07 oz/linear yd
REPEAT	(w) 2.36" x (h) 1.5"
FINISH	None
DURABILITY	 50,000 Double Rubs
PERFORMANCE	    Meets all ACT Standards
FLAMMABILITY	California Bulletin 117E AS/NZS 1530.3 AS/NZS 3837 (AS 5637.1) ISO 5660.1
PILLING	Class 4.5
LIGHTFASTNESS	Class 5 (40 hours)
SEAM SLIPPAGE	79 lbs Warp, 66.5 lbs Fill
APPLICATION	Upholstery
DESCRIPTION	Link is a modern graphic pattern with a double-cloth construction giving a bold positive/negative effect. Inspired by the concept of connectivity, transparency, and movement, Link gives tribute to Modernism.

ENVIRONMENT

- 57% rapidly renewable content (cotton).
- 43% third-party certified polyester yarn: meets human ecological requirements according to Oeko-Tex Standard 100 Class I.
- Environmentally Improved Production Process: reduced water and energy consumption, reuse + recycling of waste

GREEN STAR + LEED

- LINK can be used on white furniture certified to Ecospecifier, AFRDI, ECNZ and GECA.
- The Green Star Rating Tool states "Where at least 90% of an item's mass is certified to a GBCA recognized standard, the item can be entered as a certified product at Level A, B or C." Therefore any fabric can be used as fabrics are almost always under 10% by weight of a furniture item.
- 57% rapidly renewable content contributes to LEED MR Credit 6 Rapidly Renewable Materials.