

ECOUSTIC® GRAVURA DECONSTRUCT



unika vaev

Hear yourself think®

ECOUSTIC® GRAVURA COLORS



ALMOND



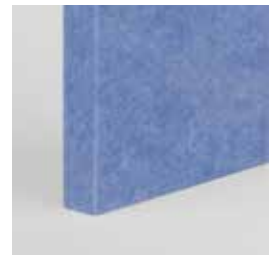
ARIZONA



ATOM



AZURE



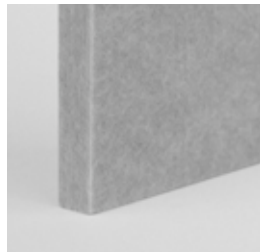
BLUEBELL



CAVE



CIRRUS



COOL



DENIM



FAWN



GALAXY



HORIZON



IRIS



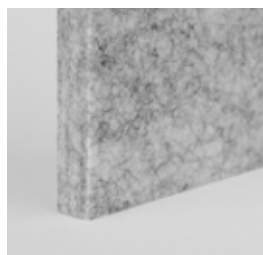
ISLE



LEAF



OLIVE



OXIDE



SNOWDROP



TRUFFLE



TUNGSTEN



VENUS

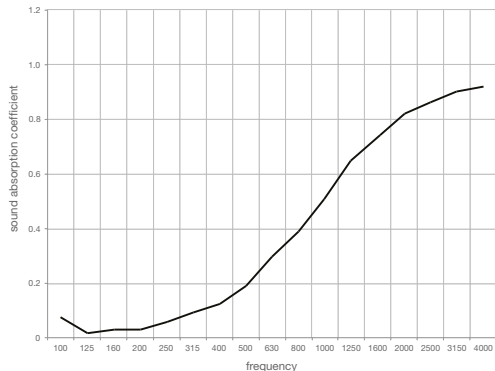
Patterns shown are not to scale
Product may vary in color due to the nature of the media
Please refer to website for current color range

ecoustic® global leaders
by **INSTYLE** in acoustic
products

ECOUSTIC® GRAVURA DECONSTRUCT



CONTENT	100% PET
THICKNESS	0.47" (12mm)
DIMENSIONS	24" x 24" (609mm x 609mm)
WEIGHT	7.9 oz/ft ² (2400 gsm +/- 10%)
FLAMMABILITY	
ASTM E84	Class A
AS/ISO 9705	Group 1
AS/NZS 1530.3	
ACOUSTIC	NRC 0.40



APPLICATION Ceiling, Wall, Vertical Surfaces

DESCRIPTION ecoustic® Gravura Tiles are produced with 100% PET Solid Color material enhanced with a peel-and-stick backing for easy DIY installation. Available in two interchangeable patterns and 15 color-ways, Gravura provides a quick and versatile sound-absorbing solution for today's changing interior needs.

Installation: ecoustic® Gravura self-stick tiles lightweight and ready to install out of the box. The tiles may be adhered to multiple types of substrates for both walls and ceilings. Because of its 24" x 24" size, Gravura may be installed in both standard or slim profile ceiling grid systems.

Interchangeable: Both patterns of Gravura are easily matched and integrate seamlessly with each other. The tiles may be positioned for up to 10 minutes after initial installation.

Designed for the Environment: Easy to disassemble and separate into the appropriate recycling systems, ecoustic® Gravura is made of 100% PET and can be recycled.

- Rapidly Renewable Content
- Low-VOC
- Oeko-Tex Certified
- Declare CDHP Emissions Compliant
- HHI Compliant
- Prop 65 Compliant
- ISO 14001-certified Environmental Management System
- Solid Core panels used to produce ecoustic® Edit are Cradle to Cradle - Bronze certified



ecoustic® global leaders
by INSTYLE in acoustic products