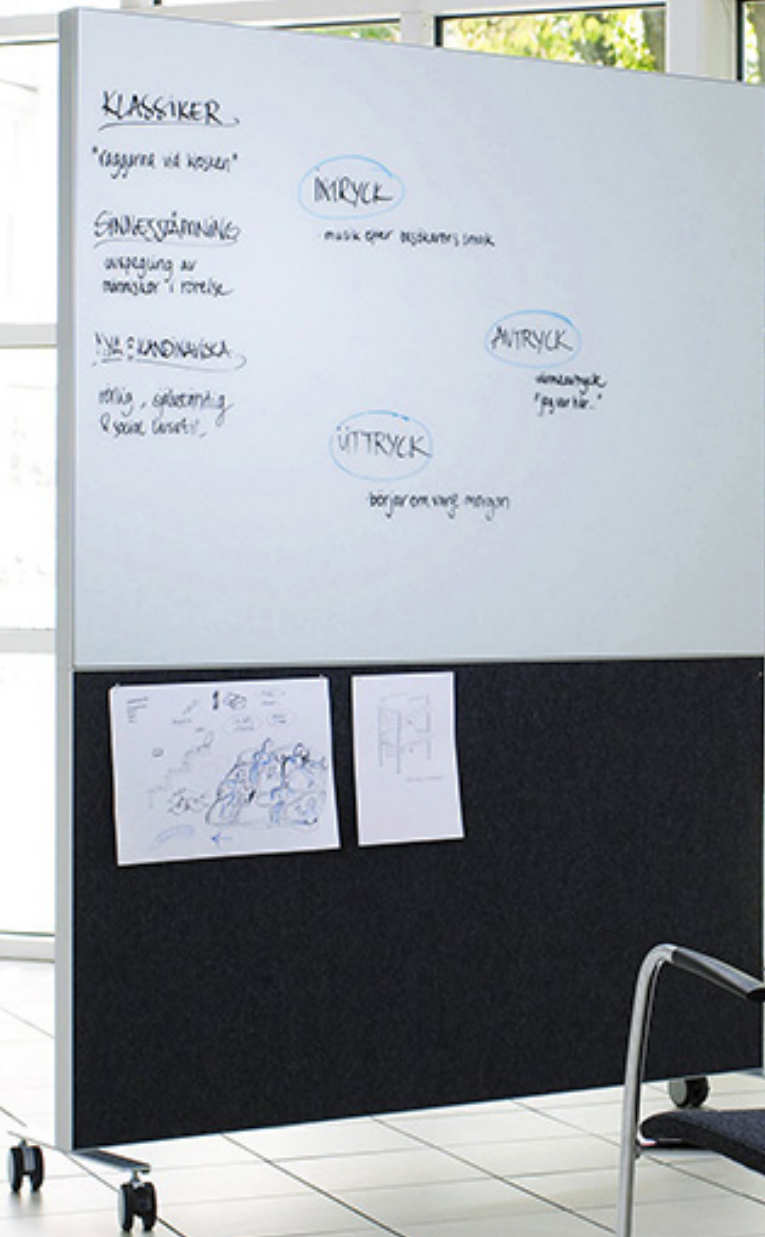


# ALUMI COMBI SCREEN



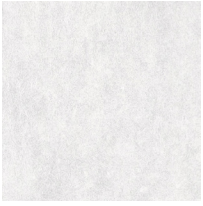
**unika vaev**  
**abstracta**

Hear yourself think®

# ALUMI COMBI SCREEN COLORS

## STANDARD OPTIONS

### Soundfelt VF



15 White



16 Grey

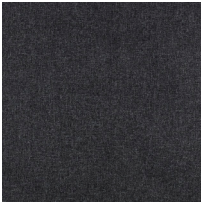


17 Dark Grey

Soundfelt VF colors are also available in several embossed relief patterns called, Stop, Block, and Dot.

- Stop: A horizontal linear pattern
- Block: A vertical linear pattern
- Dot: A circular pattern

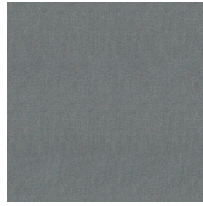
### Salsa



32 Dark Grey



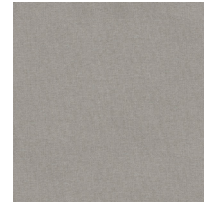
36 Middle Grey



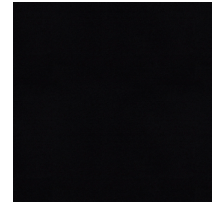
55 Light Green



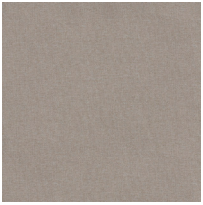
57 Beige



58 Light Grey



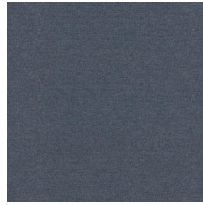
59 Black



60 Light Grey



61 Dark Blue



62 Light Blue



63 Dark Green

Lead times are contingent on color/finish availability  
Product may vary in color due to the nature of the media  
Please refer to website for current color range + larger sample swatch

**unika vaev**  

---

**abstracta**

# ALUMI COMBI SCREEN COLORS

## STANDARD OPTIONS

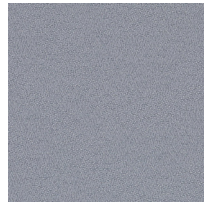
### Event



60000 crisp white



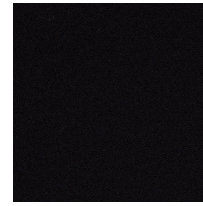
60002 steel



60004 gravel



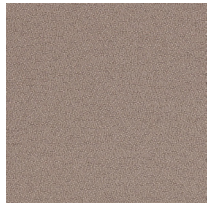
60021 anchor



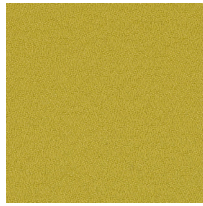
60999 onyx



61008 flax



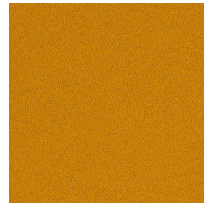
61011 saddle brown



62048 light olive



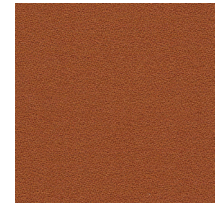
62093 pebble sand



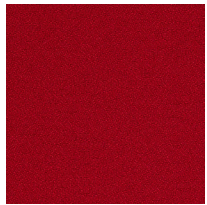
62095 honey dijon



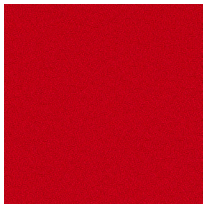
62096 sunflower



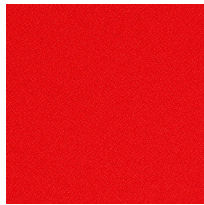
63013 rust



64029 rhubarb red



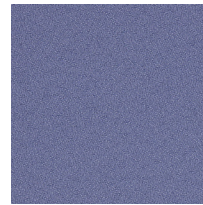
64119 persian red



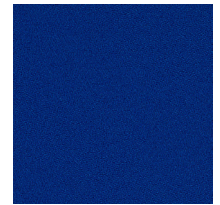
64146 pink berry



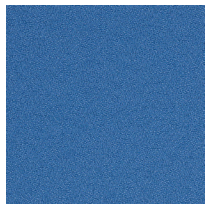
64183 rose crepe



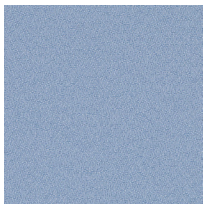
65112 lavender dream



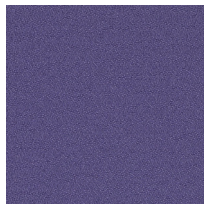
66006 feeling royal



66030 blue pansy



66031 powder blue



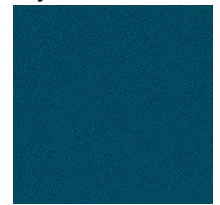
66188 deep lavender



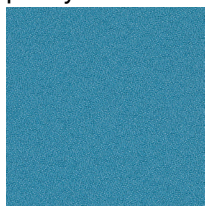
67015 pale turquoise



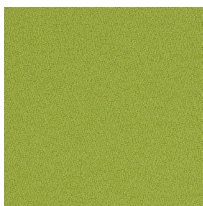
67017 soft azure



67042 teal ocean



67070 carolina



68145 pear

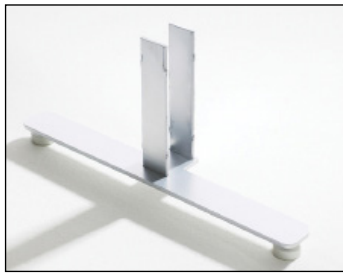
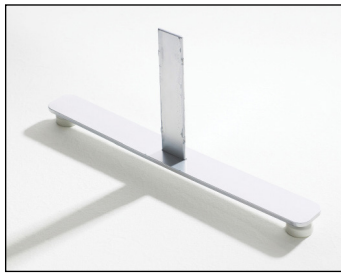
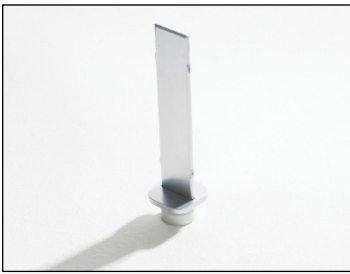


68146 jade

Lead times are contingent on color/finish availability  
Product may vary in color due to the nature of the media  
Please refer to website for current color range + larger sample swatch

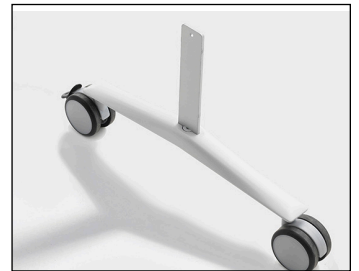
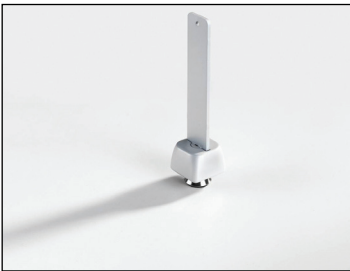
**unika vaev**  
**abstracta**

# ALUMI COMBI SCREEN BASE OPTIONS



## Basic legs

Available in grey lacquer finish. Adjustable feet or lockable castors. Leg height 1.2" from floor, except from legs with castors; 3.9".



## Molded legs

Available in silver anodized or white lacquer, RAL 9010. Adjustable feet or lockable castors. Leg height 2.2" from floor, except from legs with castors; 5".



Lead times are contingent on color/finish availability  
Product may vary in color due to the nature of the media  
Please refer to website for current color range + larger sample swatch

**unika vaev**  
**abstracta**

# ALUMI COMBI SCREEN



## DESIGNER

Nina Jobs

## CONTENT

Core: 100% Mineral Wool  
 Frame: 100% White Anodized Aluminum  
 Base: 100% Steel  
 Cover: Soundfelt VF- 100% Polyester  
 Event- 100% Polyester  
 Salsa- 100% Polyester

## DIMENSIONS

### Alumi Combi

Widths: 31.3", 47.5", or 57.6"  
 Height: 75"  
 Depth: 2.5"

### Alumi Combi Light

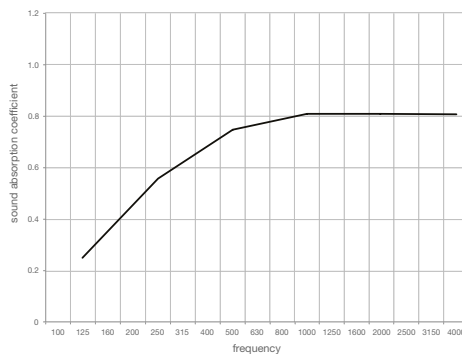
Widths: 78.3", or 31.7"  
 Heights: 71.7", or 79"  
 Depth: 2.5"

## FLAMMABILITY

Inquire

## ACOUSTIC

NRC: 0.65 (see graph on following page)



## APPLICATION

Screen

## DESCRIPTION

Alumi Screen is a flexible freestanding screen for the office as well as for public areas. The acoustic filling is made from mineral wool. The framework and the edge for the Alumi Screens are made from aluminum, which means that it is light in weight and very solid.

**Versatile:** Alumi Combi & Alumi Combi Light Screens are the ultimate combinations of mobile writing surfaces and acoustic screens. The screens consist of sound-absorbing acoustic filling mounted on an aluminum frame. Both sides of the screen are upholstered in either compressed polyester felt, polyester upholstery, or wool upholstery. The Alumi Combi Light screens are a smaller, undivided version. One side is comprised entirely of E3 enamel finish for writing, the other side is completely upholstered. Both Alumi Combi screens share the same aluminum legs with lockable wheels.

**Improved Sound Absorption:** Alumi Screen is ideal for high frequency absorption and achieves an NRC 0.65 rating.

**Recyclable:** The materials in Alumi Screens are recyclable, either as material recycling or energy recovery.

**Care Instructions:** Refer to the following page

## Designed for the Environment:

- Rapidly Renewable Content
- Recycled Content
- Environmental Product Declaration®
- No FR Additives
- No Conflict Minerals
- Red List Compliant



# ALUMI COMBI SCREEN CARE

---

**General Care:** To preserve the fabric color and appearance of the fabric, Air series modules should be vacuumed regularly with a soft nozzle.

**Polyester Stain Removal:**

- Use colorless towel or a washcloth to absorb as much as possible of still-moist stain. Dried stains should be vacuumed.
- Wet the stain sparingly with a white pure cotton cloth, warm water and possibly a little pH-neutral cleaner.
- Dab the area with a dry cloth or colorless paper towel to absorb the moisture and stain.
- Repeat this process until the stain is gone.
- On the final repetition, use only clean water with no detergent added.
- Finish by dabbing up moisture with a dry cloth or paper towel.

**Wool Stain Removal:**

- Dab or wipe gently with a damp cloth

**Whiteboards and Glass Boards:** Remove any protective film from the writing board and thoroughly clean the surface before first use. Moderately-used writing boards should then be cleaned a couple of times a week. The board must be absolutely dry when used. Use only pens intended for whiteboards. Replace the felt on the eraser on a regular basis.

**Clean as follows:**

- Wipe with approved cleaning fluid intended for whiteboards.
- Wash away residual cleaning solution with clean, lukewarm water.
- Wipe dry with a clean cloth
- Repeat steps above if necessary.
- Some stains can be cleaned with lukewarm water alone.
- Wipe dry with a clean cloth

**Please note:** Avoid detergents that are not intended for whiteboards (e.g. soap or detergent) when they can leave residues which hinder erasure.