

SOFTLINE SCREEN

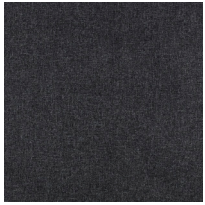
unika vaev
abstracta

Hear yourself think®

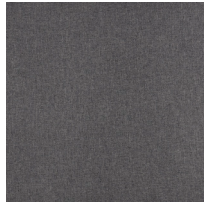
SOFTLINE SCREEN COLORS

STANDARD OPTIONS

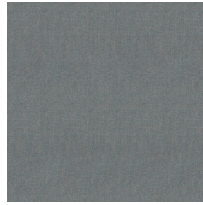
Salsa



32 Dark Grey



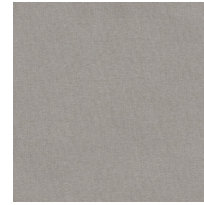
36 Middle Grey



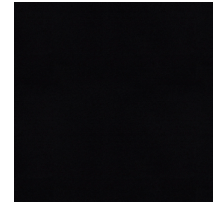
55 Light Green



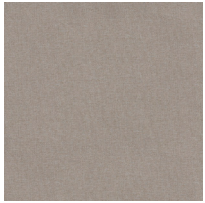
57 Beige



58 Light Grey



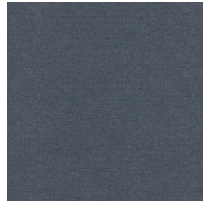
59 Black



60 Light Grey



61 Dark Blue

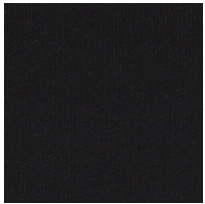


62 Light Blue

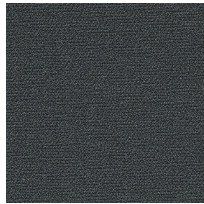


63 Dark Green

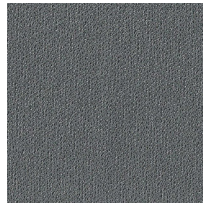
Dox



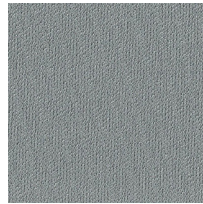
50 black



51 dark grey



52 middle grey

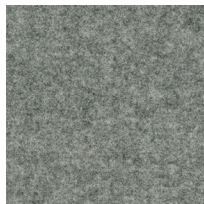


53 light grey

Focus Mélange



60309



60311



60312



61240



66209



68249

Lead times are contingent on color/finish availability
Product may vary in color due to the nature of the media
Please refer to website for current color range + larger sample swatch

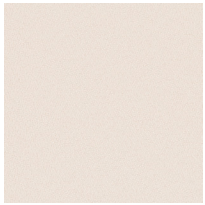
unika vaev

abstracta

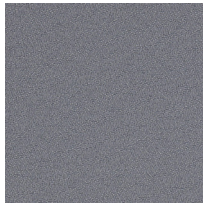
SOFTLINE SCREEN COLORS

STANDARD OPTIONS

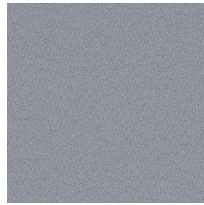
Event



60000 crisp white



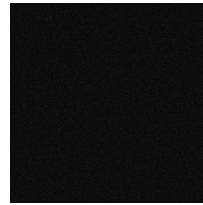
60002 steel



60004 gravel



60021 anchor



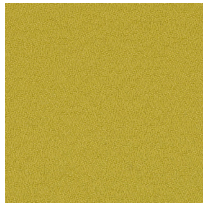
60999 onyx



61008 flax



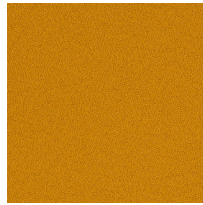
61011 saddle brown



62048 light olive



62093 pebble sand



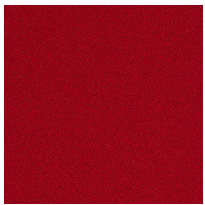
62095 honey dijon



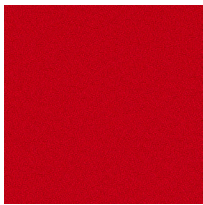
62096 sunflower



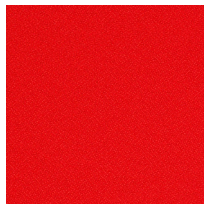
63013 rust



64029 rhubarb red



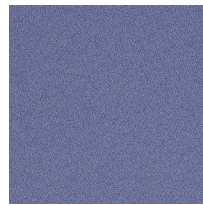
64119 persian red



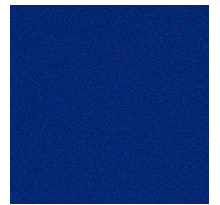
64146 pink berry



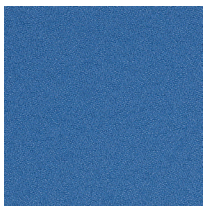
64183 rose crepe



65112 lavender dream



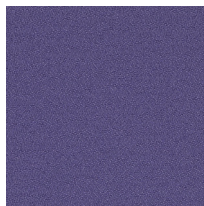
66006 feeling royal



66030 blue pansy



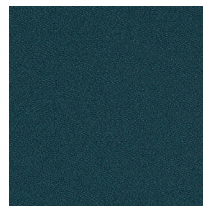
66031 powder blue



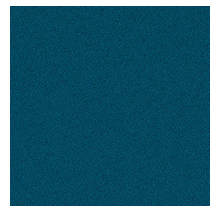
66188 deep lavender



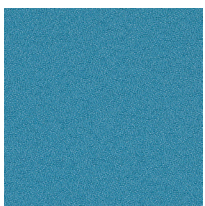
67015 pale turquoise



67017 soft azure



67042 teal ocean



67070 carolina



68145 pear



68146 jade

Lead times are contingent on color/finish availability
Product may vary in color due to the nature of the media
Please refer to website for current color range + larger sample swatch

unika vaev
abstracta

SOFTLINE SCREEN COLORS

NON-STANDARD OPTIONS

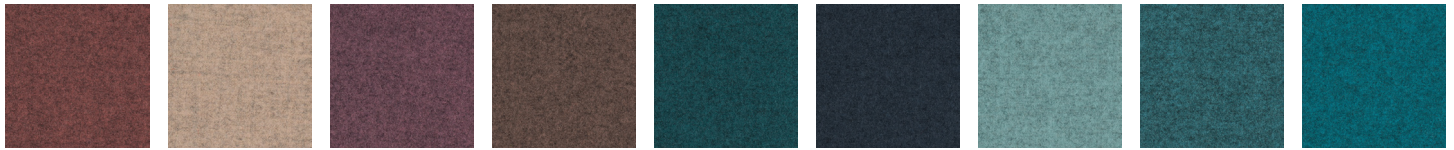
Focus Mélange



60099 60308 60310 60900 61235 61236 61237 61238 61239



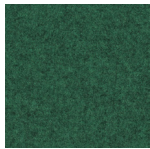
61241 61242 61243 62117 62118 63112 64241 64242 64243



64244 64245 65132 65133 66210 66211 66219 66220 66221



66222 66223 66224 68234 68235 68244 68245 68246 68247



68248

NON-STANDARD OPTIONS

Focus



60008 60200 60209 60210 60211 60212 60999 61035 61036

Lead times are contingent on color/finish availability
Product may vary in color due to the nature of the media
Please refer to website for current color range + larger sample swatch

unika vaev
abstracta

SOFTLINE SCREEN COLORS

NON-STANDARD OPTIONS

Focus



61037 61039 61040 61042 61043 61244 61248 62018 63133



64041 64043 64044 64045 65032 65033 66010 66011 66020



686021 66022 66023 68047 68048 68049 68250

Lead times are contingent on color/finish availability
Product may vary in color due to the nature of the media
Please refer to website for current color range + larger sample swatch

unika vaev

abstracta

SOFTLINE SCREEN



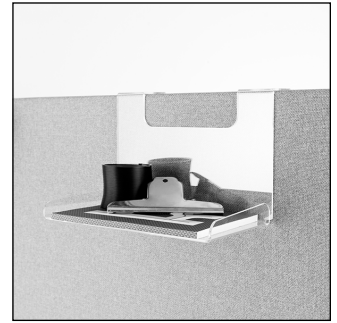
Standard 'Starter' Legs



Acrylic Pen Holder



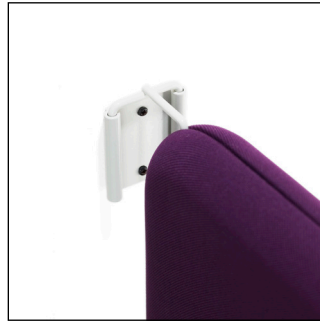
Acrylic Pigeon Hole



Acrylic Shelf



Standard Legs with Castors



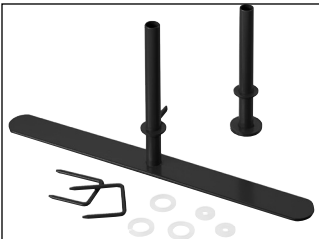
Connector to Wall



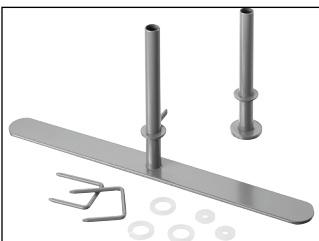
Connect 3 Screens



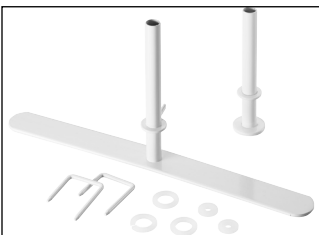
Connect 4 Screens



RAL 9011 - Black Lacquered



RAL 9007 - Grey Lacquered



RAL 9002 - White Lacquered

Starter set, legs floor screen

Leg set, connecting screen

Connecting screens

When using multiple screens, connected together, choose one "Starter set, legs floor screen" for the first screen, and "Leg set, connecting screen" for the rest of the screens.

Single screen

When using a single screen, choose "Starter set, legs floor screen" for maximum stability!

Lead times are contingent on color/finish availability
 Product may vary in color due to the nature of the media
 Please refer to website for current color range + larger sample swatch

SOFTLINE SCREEN



CONTENT

Core: 100% Mineral Wool
 Frame: 100% Pine
 Base: 100% Steel in black, grey or white
 Top: 100% Acrylic (optional)
 Cover: Focus- 100% NZ Wool
 Event- 100% Polyester
 Salsa- 100% Polyester
 Dox- 100% Polyester

DIMENSIONS

(w) 31.5" x (h) *53.5" x (d) 1.18" or 1.97"
 (w) 31.5" x (h) *59" x (d) 1.18" or 1.97"
 (w) 31.5" x (h) *66.9" x (d) 1.18" or 1.97"
 (w) 39.3" x (h) *53.5" x (d) 1.18" or 1.97"
 (w) 39.3" x (h) *59" x (d) 1.18" or 1.97"
 (w) 39.3" x (h) *66.9" x (d) 1.18" or 1.97"
 (w) 47.2" x (h) *53.5" x (d) 1.18" or 1.97"
 (w) 47.2" x (h) *59" x (d) 1.18" or 1.97"
 (w) 47.2" x (h) *66.9" x (d) 1.18" or 1.97"
 *Acrylic top dividers add 11.2" to all heights

FLAMMABILITY

Inquire

ACOUSTIC

NRC: 0.75

APPLICATION

Screen

DESCRIPTION

Softline is a modular screen partition system that easily adapts to the changing requirements of the functional work-space. Available in different sizes and shapes, Softline's solid wood frame, connecting system, and leg platform offers excellent stability. A sound-absorbing mineral wool core and cover fabric in many colors creates an attractive acoustically comfortable work-space.

Improved Sound Absorption: Softline Screens are ideal for high frequency absorption and achieves an NRC 0.75. Please refer to graph on following page.

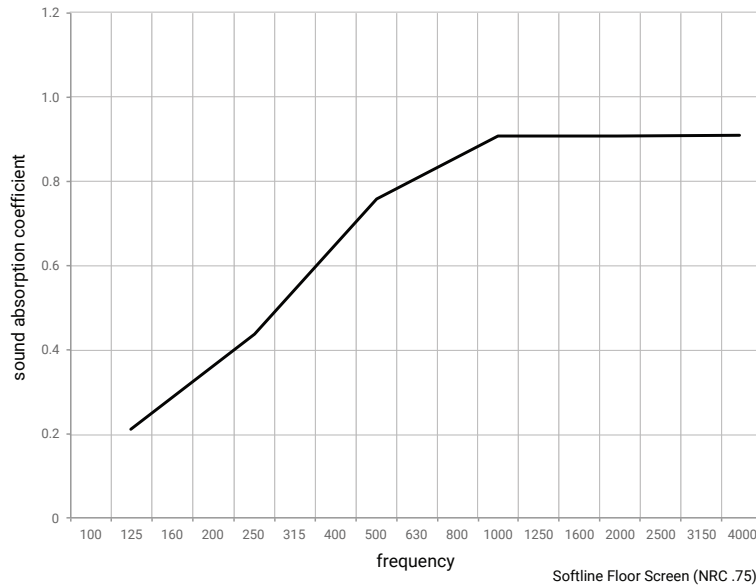
Acrylic Top Divider: Acrylic glass tops for the Softline floor and table screens are available. The top bracket can be mounted directly from the factory, or it is easy to mount the brackets and acrylic top yourself, on an existing screen. The acrylic top is compatible with all models of floor and table screens in the Softline series.

Designed for the Environment:

- Rapidly Renewable Content
- mindful MATERIALS
- Low VOC
- Environmental Product Declaration®
- Health Product Declaration®
- Declare Compliant
- Red List Compliant
- No FR Additives
- No Conflict Minerals



SOFTLINE SCREEN



SOFTLINE SCREEN CARE

Basic Care:

- To maintain the color and appearance of the fabric covering it should be vacuum cleaned regularly with a clean, soft, brush nozzle.

Polyester Stain Removal:

- Use colorless towel or a washcloth to absorb as much as possible of still-moist stain. Dried stains should be vacuumed.
- Wet the stain sparingly with a white pure cotton cloth, warm water and possibly a little pH-neutral cleaner.
- Dab the area with a dry cloth or colorless paper towel to absorb the moisture and stain.
- Repeat this process until the stain is gone.
- On the final repetition, use only clean water with no detergent added.
- Finish by dabbing

Wool Stain Removal:

Dab or wipe gently with a damp cloth.

Acrylic Glass Care:

- Wipe with approved cleaning fluid intended for glass.
- Wash away residual cleaning solution with clean lukewarm water.
- Wipe dry with clean cloth.
- Repeat if necessary.
- Please Note- Avoid use of detergents that are not intended for whiteboards (e.g. soap or detergent) when they can leave streaks.