

TRUMPET



unika vaev
abstracta

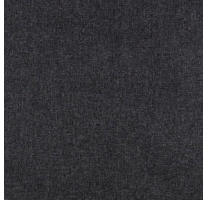


Hear yourself think®

TRUMPET COLORS

STANDARD OPTIONS

Salsa



32 Dark Grey



36 Middle Grey



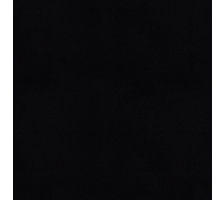
55 Light Green



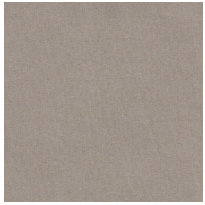
57 Beige



58 Light Grey



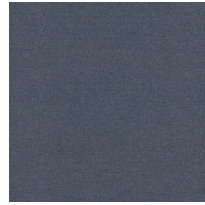
59 Black



60 Light Beige



61 Dark Blue

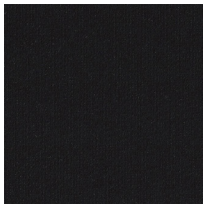


62 Light Blue

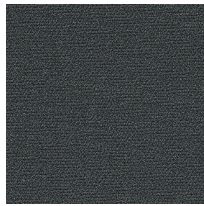


63 Dark Green

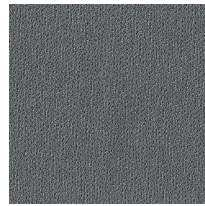
Dox



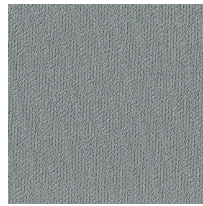
(50) black



(51) dark grey



(52) middle grey

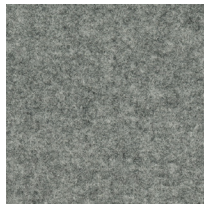


(53) light grey

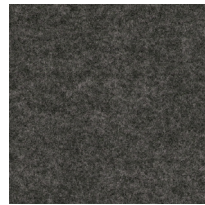
Focus Mélange



60309



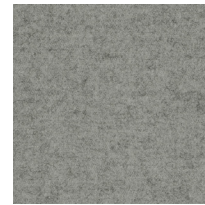
60311



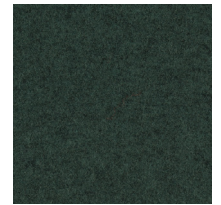
60312



61240



66209



68249

Lead times are contingent on color/finish availability
Product may vary in color due to the nature of the media
Please refer to website for current color range + larger sample swatch

unika vaev
abstracta

TRUMPET COLORS

NON-STANDARD OPTIONS

Focus Mélange



Lead times are contingent on color/finish availability
Product may vary in color due to the nature of the media
Please refer to website for current color range + larger sample swatch

unika vaev
abstracta

TRUMPET COLORS

NON-STANDARD OPTIONS

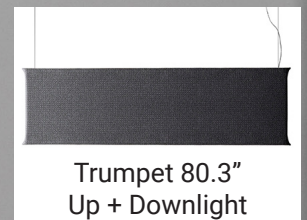
Focus



Lead times are contingent on color/finish availability
Product may vary in color due to the nature of the media
Please refer to website for current color range + larger sample swatch

unika vaev
abstracta

TRUMPET MODEL OPTIONS



Lead times are contingent on color/finish availability
Product may vary in color due to the nature of the media
Please refer to website for current color range + larger sample swatch

unika vaev
abstracta

TRUMPET



DESIGNER	Stone Designs
CONTENT	
Frame	100% Plywood
Core	100% Recycled PET & Fabric waste
Fabric Covering	Dox: 100% Polyester Salsa: 100% Polyester Focus/Focus Mélange: 100% NZ Wool
DIMENSIONS	
	Trumpet absorber (without lighting)
	- (L) 40.9" x (H) 20.25" x (D) 3.125"
	- (L) 80.3" x (H) 20.25" x (D) 3.125"
	Trumpet Downlight or Uplight
	- (L) 40.9" x (H) 20.25" x (D) 3.125"
	- (L) 80.3" x (H) 20.25" x (D) 3.125"
	Trumpet Uplight & Downlight
	- (L) 40.9" x (H) 22.8" x (D) 3.125"
	- (L) 80.3" x (H) 22.8" x (D) 3.125"
FLAMMABILITY	Please Inquire
ACOUSTIC	
40.9" Trumpet	NRC: 0.55 (refer to graph on following page)
80.3" Trumpet	NRC: 0.55 (refer to graph on following page)
APPLICATION	Ceiling

Installation: Elegantly suspended from the ceiling, the cables are easily adjusted to your desired height.

Accessories Provided: A 118" wire with a ceiling anchor and 236" of electrical cable are included. On request, the product can be Dali-compatible. Mounting points vary depending on model. For the downlight model the wires are fixed approximately 2.6" from each edge. The wires on the uplight model are 1.6" from the edges. The distance between the mounting points for the smaller Trumpet models are 35.4" and the distance between mounting points for the larger Trumpet models are 74.8".

Custom: Trumpet is available in two standard sizes but can be delivered in customized sizes upon request.

Lighting Features:

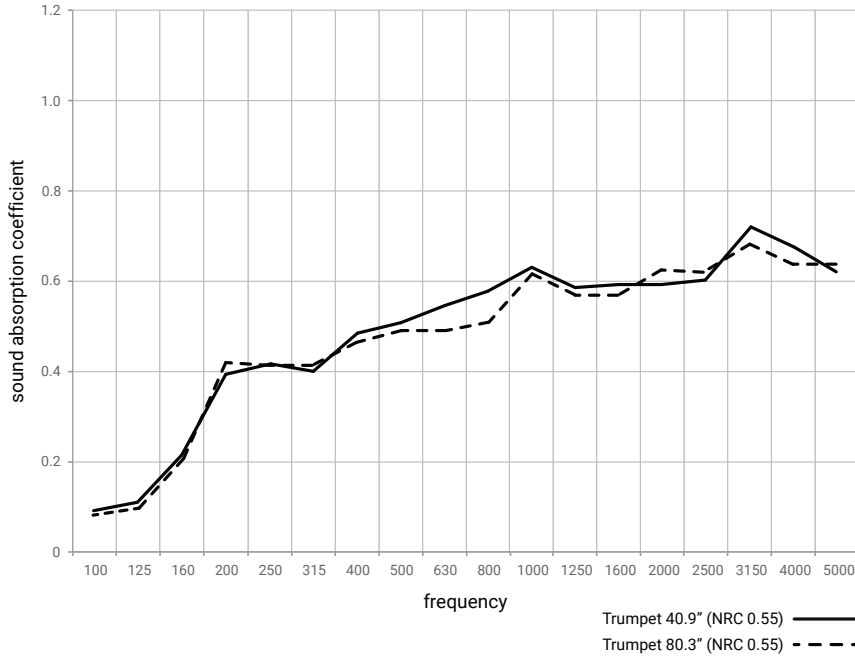
- Delivered Lumen Output- 40.9" (1760) | 80.3" (3520)
- Wattage- 30W
- Color Rendering Index (CRI)- 94
- Color Temperature- 3000K
- Beam Distribution- 170-175°
- Light Lifespan- 40,000 Hours
- Voltage- EU version 230V
- Dimmable + Dali (Digital Addressable Lighting Interface) available upon request

Designed for the Environment:

- Rapidly Renewable Content
- Recycled Content
- FSC Certified Wood
- No FR Additives
- No Conflict Minerals
- Red List Compliant



TRUMPET ACOUSTIC PERFORMANCE



¹ / ₃ Octave band frequency (Hz)	Trumpet 40.9"	Trumpet 80.3"
100	0.08	0.07
125	0.12	0.09
160	0.22	0.21
200	0.39	0.43
250	0.42	0.42
315	0.40	0.42
400	0.48	0.46
500	0.52	0.49
630	0.55	0.49
800	0.58	0.52
1000	0.63	0.62
1250	0.58	0.57
1600	0.59	0.57
2000	0.59	0.63
2500	0.60	0.62
3150	0.74	0.68
4000	0.67	0.64
5000	0.63	0.64
NRC	0.55	0.55

TRUMPET CARE

Basic Care:

- To maintain the color and appearance of the fabric covering it should be vacuum cleaned regularly with a clean, soft, brush nozzle.

Polyester Stain Removal:

- Use colorless towel or a washcloth to absorb as much as possible of still-moist stain. Dried stains should be vacuumed.
- Wet the stain sparingly with a white pure cotton cloth, warm water and possibly a little pH-neutral cleaner.
- Dab the area with a dry cloth or colorless paper towel to absorb the moisture and stain.
- Repeat this process until the stain is gone.
- On the final repetition, use only clean water with no detergent added.
- Finish by dabbing

Wool Stain Removal:

Dab or wipe gently with a damp cloth.