

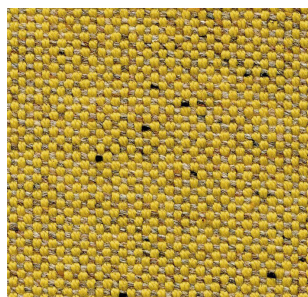
CALIBRE 688



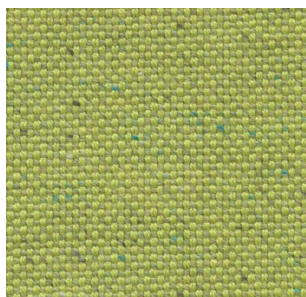
unika vaev
INSTYLE

Bringing Design to Life

CALIBRE 688



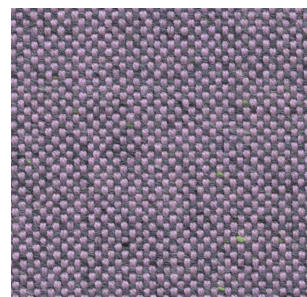
/10 QUALITY



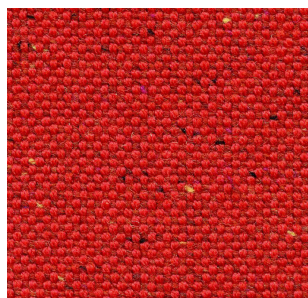
/16 WISDOM



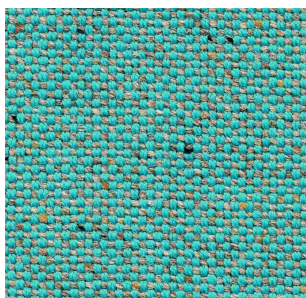
/18 AESTHETIC



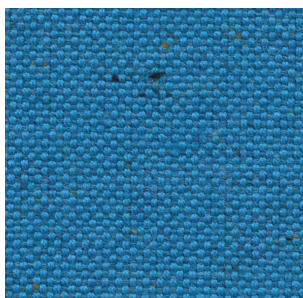
/19 REVERE



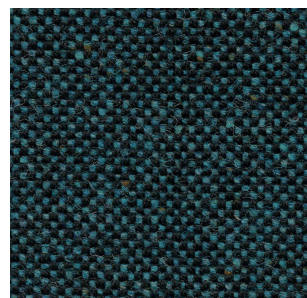
/21 COURAGE



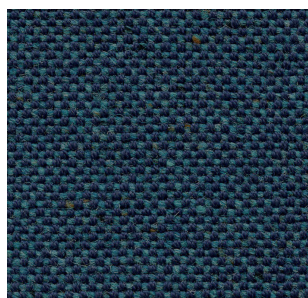
/35 VIRTUE



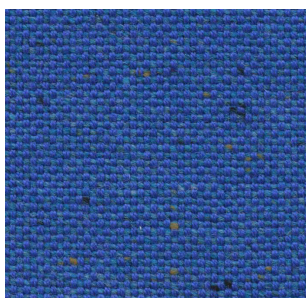
/36 VALOUR



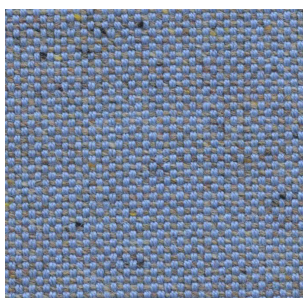
/38 STATUS



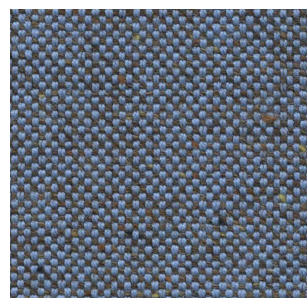
/40 ICON



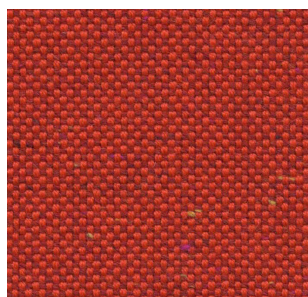
/42 KEYNOTE



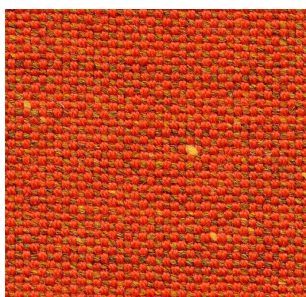
/43 LUMINARY



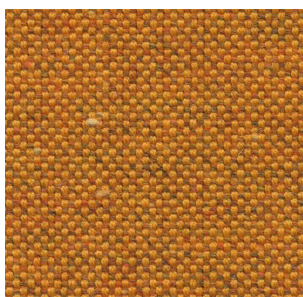
/44 ULTIMATE



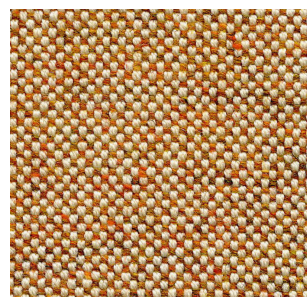
/51 RITZ



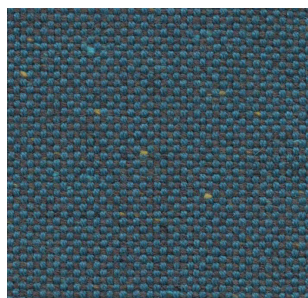
/52 TALENT



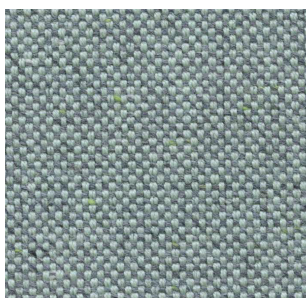
/53 PARAMOUNT



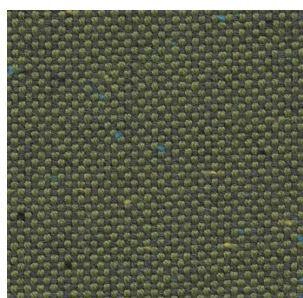
/54 CHARACTER



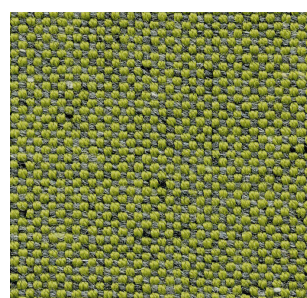
/62 LITERARY



/63 OPUS



/64 BUSINESS

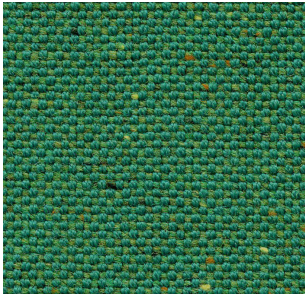


/66 MERIT

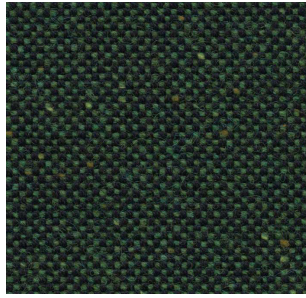
Patterns shown are not to scale
Product may vary in color due to the nature of the media
Please refer to website for current color range

unika vaev
INSTYLE

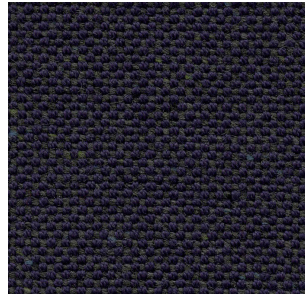
CALIBRE 688



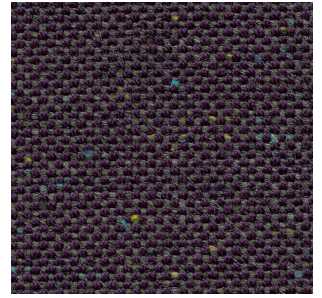
/67 FINE



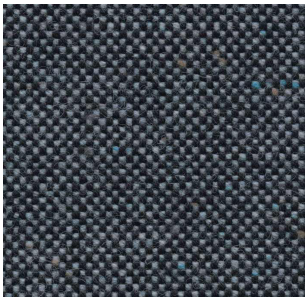
/68 HONOURS



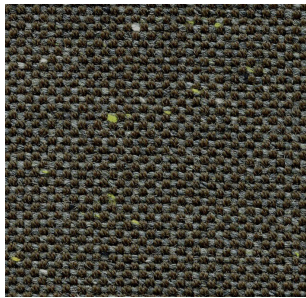
/75 GENTRY



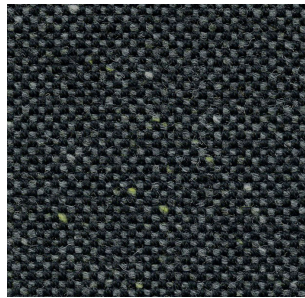
/77 GRADE



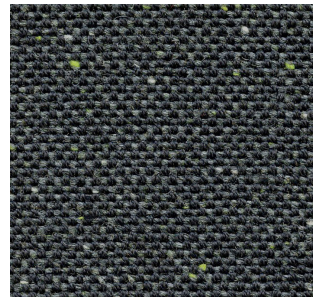
/78 TITLE



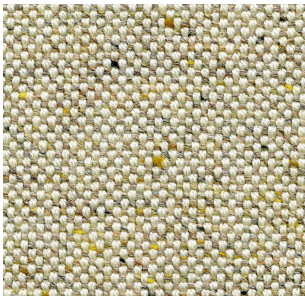
/79 PRINCIPLE



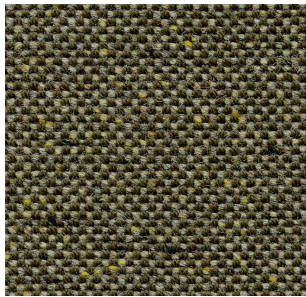
/80 ELITE



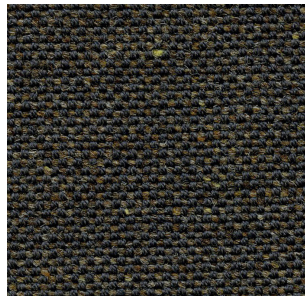
/81 ESTEEM



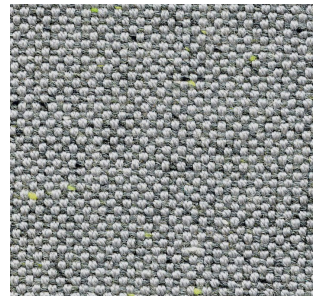
/82 WORTH



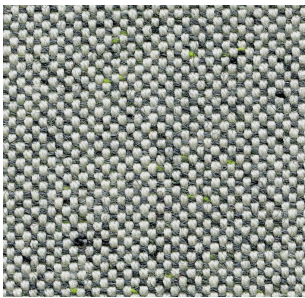
/89 SQUIRE



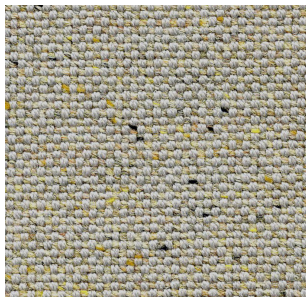
/90 FORTE



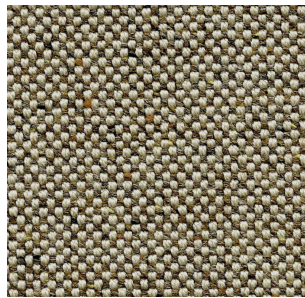
/91 INTEGRITY



/92 DANDY



/93 DISTINCTION



/94 CLASS



/95 ARIA




/96 NOBLE

Patterns shown are not to scale
Product may vary in color due to the nature of the media
Please refer to website for current color range

unika vaev
INSTYLE

CALIBRE 688



CONTENT	82% Wool, 18% Nylon
WIDTH / WEIGHT	54" / 13.45 Oz Linear Yard
REPEAT	None
FINISH	None
DURABILITY	 100,000 Martindale Cycles

PERFORMANCE	 Meets all ACT standards
--------------------	---

SEAM SLIPPAGE ASTM D4034-92	54.9 lbs Warp, 42.5 lbs Fill
---------------------------------------	------------------------------

PILLING ASTM D3511	Class 5
------------------------------	---------

LIGHTFASTNESS ASTM D3511	Class 5 (40 Hours)
------------------------------------	--------------------

FLAMMABILITY ASTM E84 Unadhered Cal 117 AS/NZS 1530.3 AS/NZS 3837 IMO A.652(16) IMO 2010 FTP Code Pt8 ISO 5660.1	Class 1
--	---------

APPLICATION	Upholstery
--------------------	------------

CLEANING CODE	S - Spot clean using a mild water-free solvent, or dry cleaning product. Clean only in a well ventilated room and avoid any product containing Carbon Tetrachloride or other toxic materials.
----------------------	---

GREEN STAR + LEED

- CALIBRE can be used on white furniture certified by AFRDI, GECA, Ecospecifier (Level B + C) and ECNZ.
- The Green Star Rating Tool states "Where at least 90% of an item's mass is certified to a GBCA recognized standard, the item can be entered as a certified product at Level A, B or C". Therefore, any fabric can be used as fabrics are almost always under 10% by weight of a furniture item.
- 82% rapidly renewable content contributes to LEED MR Credit 6 Rapidly Renewable Materials.

LEED

CALIBRE can contribute points to the following LEED criteria:

- Bio-Based + Rapidly-Renewable Content (82%)
- Low-VOC
- Extended Producer Responsibility Recycling Program

WELL

CALIBRE can contribute to the following WELL criteria:

- Low VOC / VOC Reduction: CALIBRE is low VOC
- Toxic Material Reduction: CALIBRE is free of PFCs, flame retardants, phthalates and urea formaldehyde

ENVIRONMENT

- Rapidly Renewable Content
- Low VOC
- HPD
- Red List Compliant
- No Conflict Minerals
- No FR Additives
- Prop 65 Compliant
- PVC Free

