

# SUEDE PLUSH 729



unika vaev

Bringing Design to Life



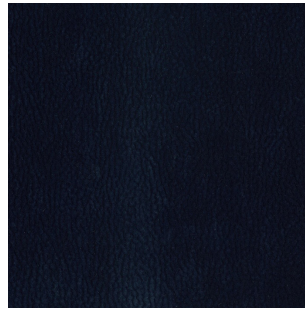
# SUEDE PLUSH 732



/21 SWEET PAPRIKA



/39 BLUE COTTON



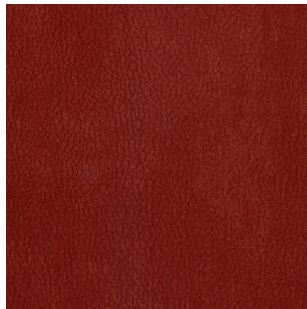
/40 DEEP SAPPHIRE



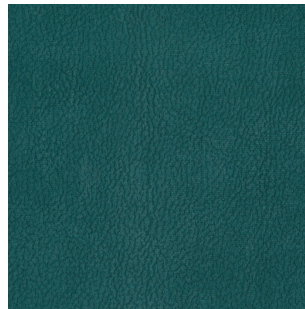
/41 BEST BLUE



/42 DENIM VELVET



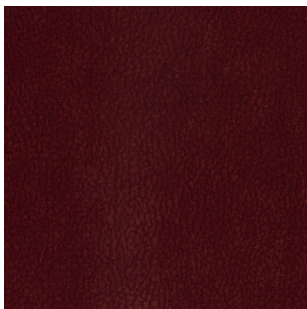
/53 SIENNA



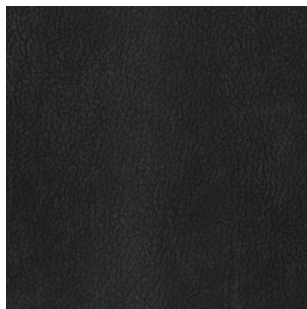
/62 SPRUCE



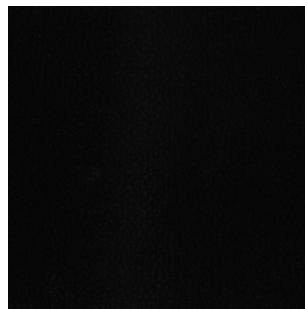
/63 EUCALYPTUS



/72 BURNT UMBER



/79 BLACK CHARCOAL



/80 BLACK



/82 NATURAL ALPACA



/83 BUCKSKIN



/88 SMOKY TAUPE



/90 CHICORY



/92 FOG

Patterns shown are not to scale  
Product may vary in color due to the nature of the media  
Please refer to website for current color range

unika vaev



# SUEDE PLUSH 729



<b>DESIGNER</b>	Courtney Brooks
<b>CONTENT</b>	54% Acrylic, 25% Polyamide, 14% Polyester, 7% Cotton
<b>WIDTH / WEIGHT</b>	54" / 14.75 oz linear yard
<b>REPEAT</b>	none
<b>FINISH</b>	none

**DURABILITY** **A** 100,000 Martindale cycles

**PERFORMANCE**      
Meets all ACT standards

**APPLICATION** Upholstery, Vertical Surfaces

**FLAMMABILITY**  
Cal Bulletin 117e

**CLEANING CODE** WS

**DESCRIPTION** SUEDE PLUSH provides the luxury and softness of a high-quality suede while performing at a higher level. This product is inherently ink resistant, stain resistant and resistant to liquids such as red wine and ketchup. Alcohol swabs or warm soap + water provide for ease of clean-ability. Suede Plush is an ideal choice for heavy duty upholstery + panel applications while boasting 100,000 Martindale cycles and 16 sumptuous color offerings.

## ENVIRONMENT:

- PVC Free
- Prop 65 Compliant
- No FR Additives
- No Conflict Minerals
- Red List Compliant

