

TWISTER PLUS

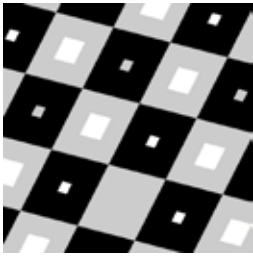


unika vaev

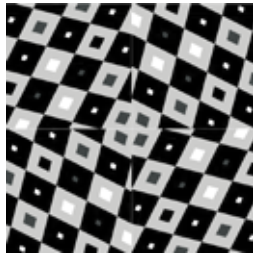
fraster 

Hear yourself think®

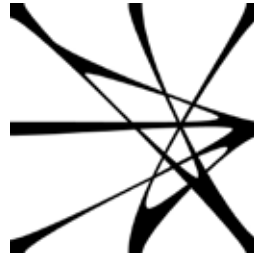
TWISTER PLUS PATTERNS



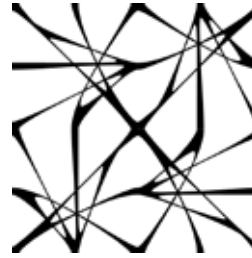
ALTO



ALTO x4



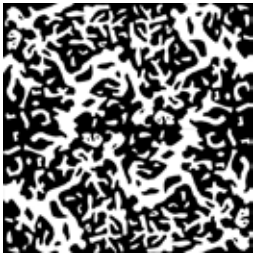
BALANCE



BALANCE x4



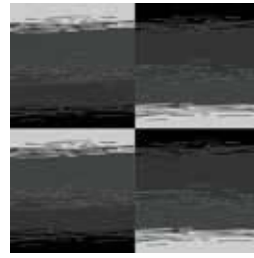
BARK



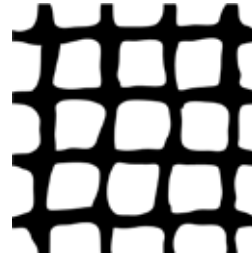
BARK x 4



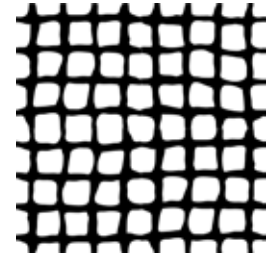
CIRRUS



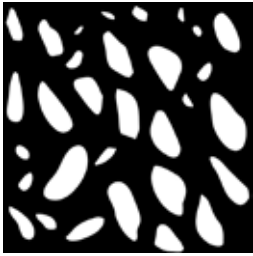
CIRRUS x4



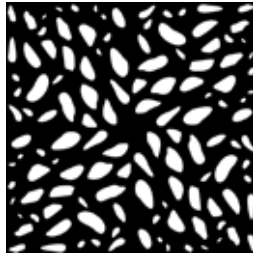
COBBLE



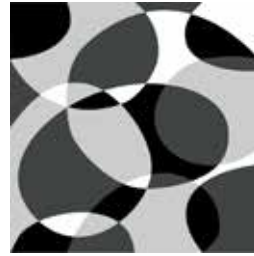
COBBLE x4



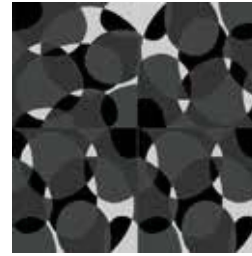
COCOON



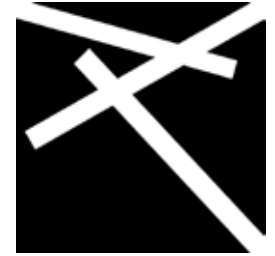
COCOON x4



CUMULUS



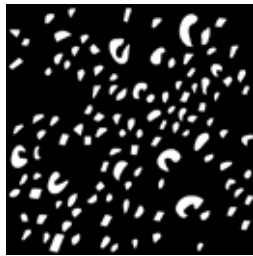
CUMULUS x4



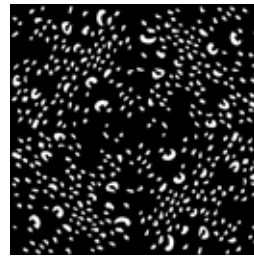
CUT



CUT x4



DROPS



DROPS x4



EVERGREEN



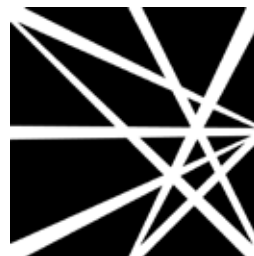
EVERGREEN x4



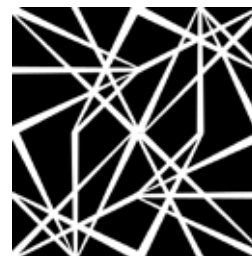
FLOWER



FLOWER x4



FOLD



FOLD x4



GESTUS

Patterns shown are not to scale
 Product may vary in color due to the nature of the media
 Please refer to website for current color range

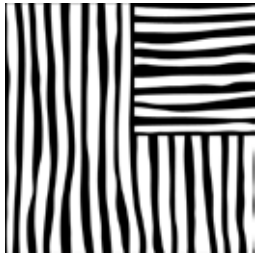
unika vaev

fraster 

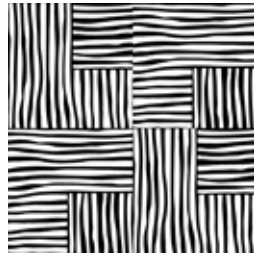
TWISTER PLUS PATTERNS



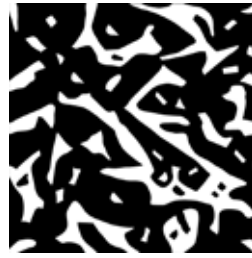
GESTUS x4



GRASS



GRASS x4



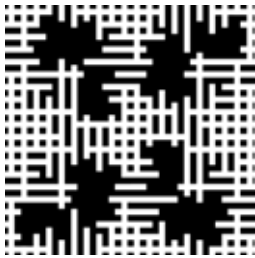
GRIT



GRIT x4



KNOT



KNOT x4



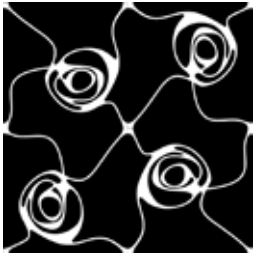
NIMBUS



NIMBUS x4



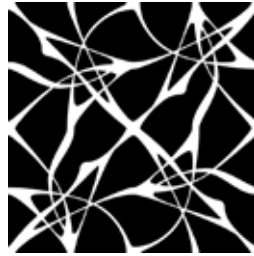
ROTATE



ROTATE x4



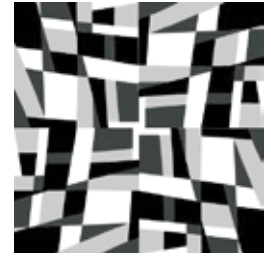
SCORE



SCORE x4



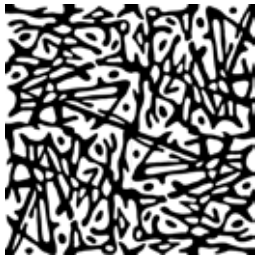
STRATUS



STRATUS x4



STRAW



STRAW x4



TURN



TURN x4



TWIG



TWIG x4



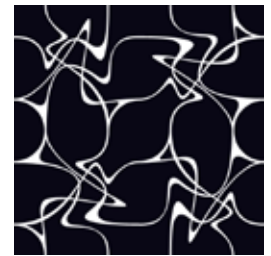
WARP



WARP x4



WEAVE



WEAVE x4

Each pattern is designed to match on all four sides. By placing four or more Twister Plus panels together an entirely new pattern is created. Combinations are seemingly endless with 50 patterns and many colors to choose from. You can even create your own special Twister Plus pattern to perfectly suit your interior design needs. For more information on custom pattern creation, contact Unika Vaev. customerservice@unikavaev.com - 800-237-1625

Patterns shown are not to scale
Product may vary in color due to the nature of the media
Please refer to website for current color range

unika vaev

fraster 

TWISTER PLUS FELT COLORS



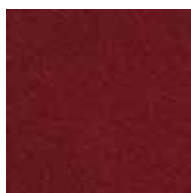
102 Red



105 Orange



130 Ochre



136 Wine



150 Off White



160 Beige



170 Silver



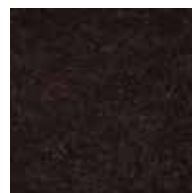
175 Charcoal



190 Beaver



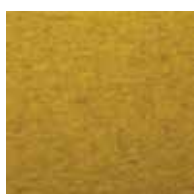
220 Deer



250 Truffle



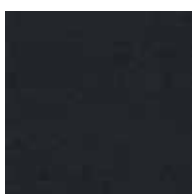
262 Mint



274 Curry



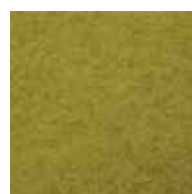
300 Anthrazite



309 Ink



312 Azur



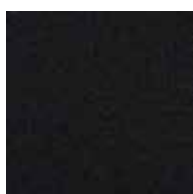
398 Citrus



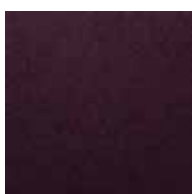
399 Banana



415 Dust Green



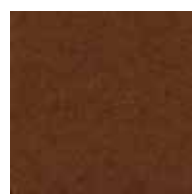
426 Black



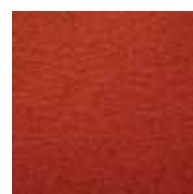
437 Aubergine



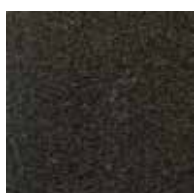
448 Moss



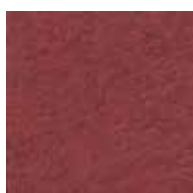
463 Sepia



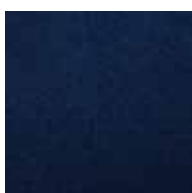
484 Tomato



499 Dark Brown



534 Flamingo



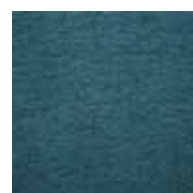
539 Midnight



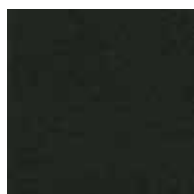
540 Ocean



541 Sky



555 Cadet



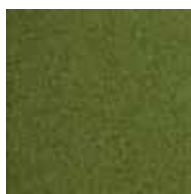
560 Emerald



645 Iceberg



723 Peach



732 Fern



749 Spring

Patterns shown are not to scale
Product may vary in color due to the nature of the media
Please refer to website for current color range

unika vaev

fraster 

TWISTER PLUS



PRODUCT	Twister Plus
CONTENT	100% Polyester acoustic core 100% Merino wool felt face
DIMENSIONS	34.66" x 34.66" (88 x 88 cm) or 23.22" x 23.22" (59 x 59 cm)
THICKNESS	0.59" (15 mm)
FLAMMABILITY	Please Inquire
APPLICATION	Vertical surfaces, Horizontal or Wire suspension from ceiling.
ACOUSTIC	Direct mount 1.2" spacing 2" spacing
DESCRIPTION	Twister Plus is a dynamic wall panel that features 50 different patterns and many color options. By combining panels you are able to create new and exciting patterns that can be manipulated in many different ways, Twister Plus is comprised of an acoustic plate upholstered with 100% Merino felt. This allows for improved sound absorption and a more pleasant interior space both visually and acoustically.

IMPORTANT

When mounting multiple Twister Plus modules to a wall you should keep a minimum of .4" (10mm) space between each. This spacing will ensure that the patterns will blend seamlessly into each other. The modules are not designed to be butted against each other.

ENVIRONMENT

- Rapidly Renewable Content
- Low VOC
- Oeko-Tex® Certified
- Prop 65 Compliant
- Red List Compliant
- No FR Additives
- No Conflict Minerals



TWISTER PLUS PERFORMANCE

