

ECOUSTIC® DUAL - PANEL COLLECTION



unika vaev

INSTYLE

Hear yourself think®

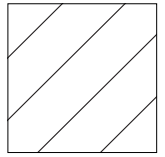
ECOUSTIC® DUAL - HOW TO DESIGN

Available in a variety of designs + many color combinations, Ecooustic® Dual provides the ultimate in design flexibility.



1

Choose a Design



2

Select a Face Color from 39 options of Ecooustic® Felt



3

Select a Base Color from 17 options of Solid Core



4

Resulting Design:
Dual Diagonal 55
Natural on Fawn

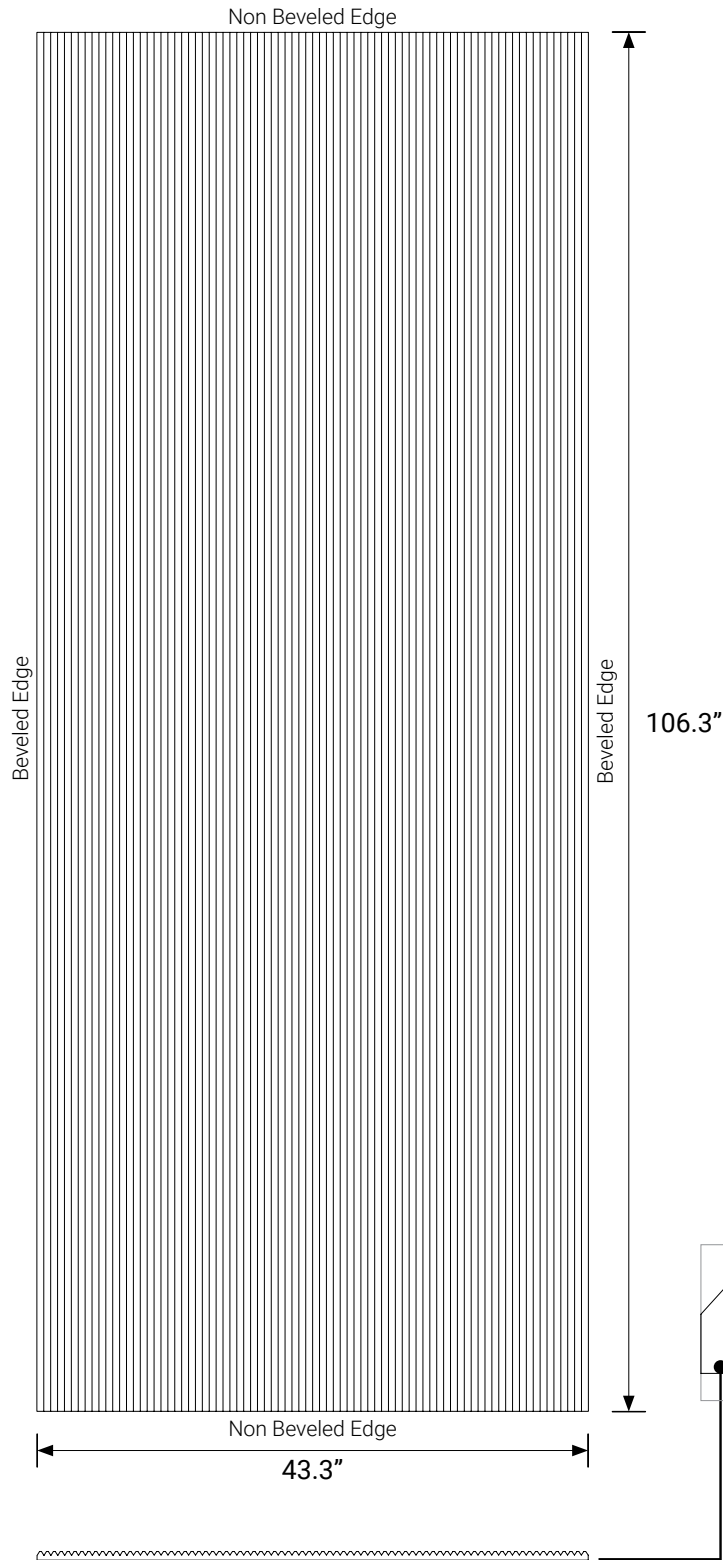


Product may vary in color due to the nature of the media
Please refer to website for current color range

ecooustic® global leaders
by INSTYLE in acoustic
products

ECOUSTIC® DUAL DESIGNS

Dual Line 14



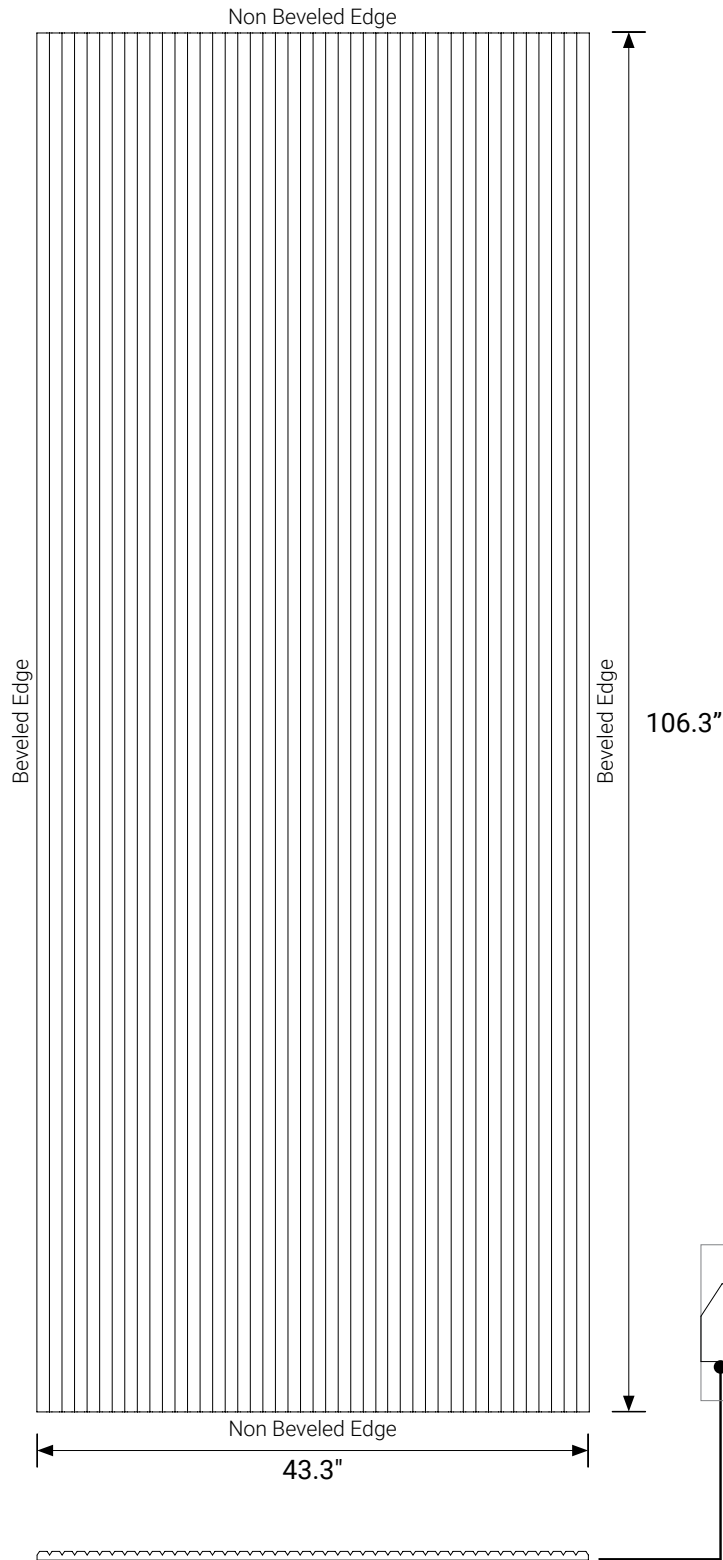
Important: If panels are to be adjoined on the short edge, please check alignment of the grooves with site conditions and trim accordingly

Patterns shown above are not to scale
Product may vary in color due to the nature of the media
Please refer to website for current color range

ecoustic® global leaders
by INSTYLE in acoustic
products

ECOUSTIC® DUAL DESIGNS

Dual Line 25



Important: If panels are to be adjoined on the short edge, please check alignment of the grooves with site conditions and trim accordingly

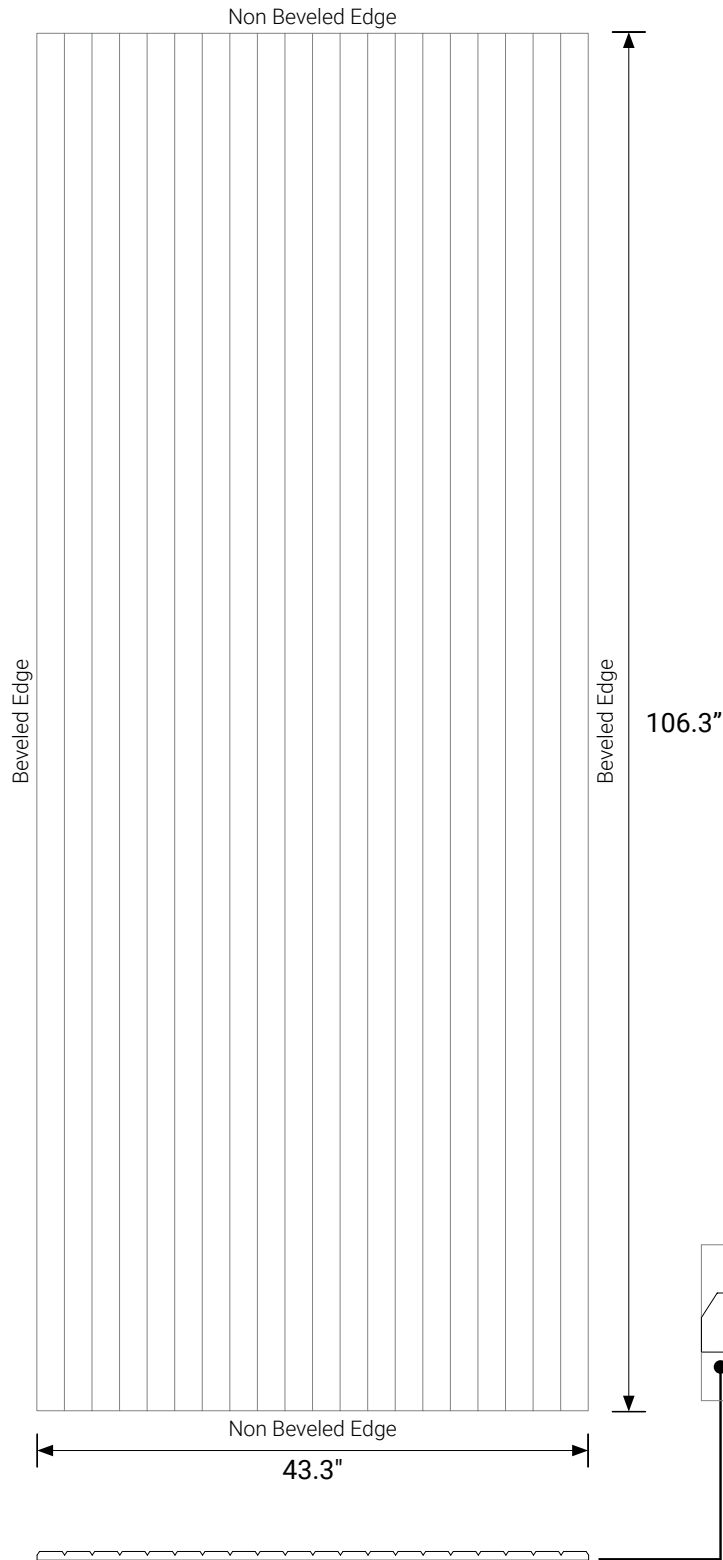
Approximate V groove dimensions:
.28" width, .24" depth @ 1" center to center. Dimensions are nominal and can vary slightly

Patterns shown above are not to scale
Product may vary in color due to the nature of the media
Please refer to website for current color range

ecoustic® global leaders
by INSTYLE in acoustic
products

ECOUSTIC® DUAL DESIGNS

Dual Line 55

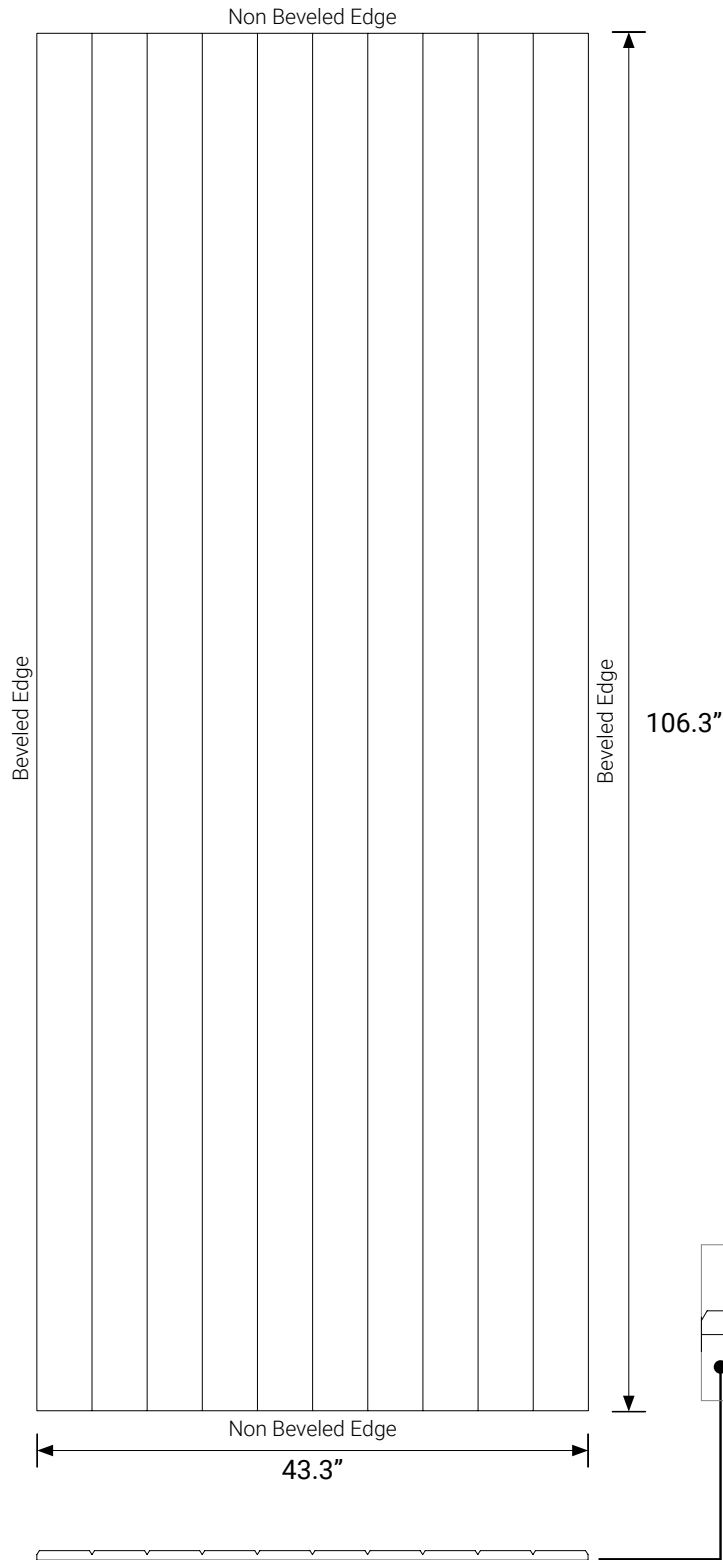


Patterns shown above are not to scale
Product may vary in color due to the nature of the media
Please refer to website for current color range

ecoustic® global leaders
by INSTYLE in acoustic
products

ECOUSTIC® DUAL DESIGNS

Dual Line 110



Important: If panels are to be adjoined on the short edge, please check alignment of the grooves with site conditions and trim accordingly

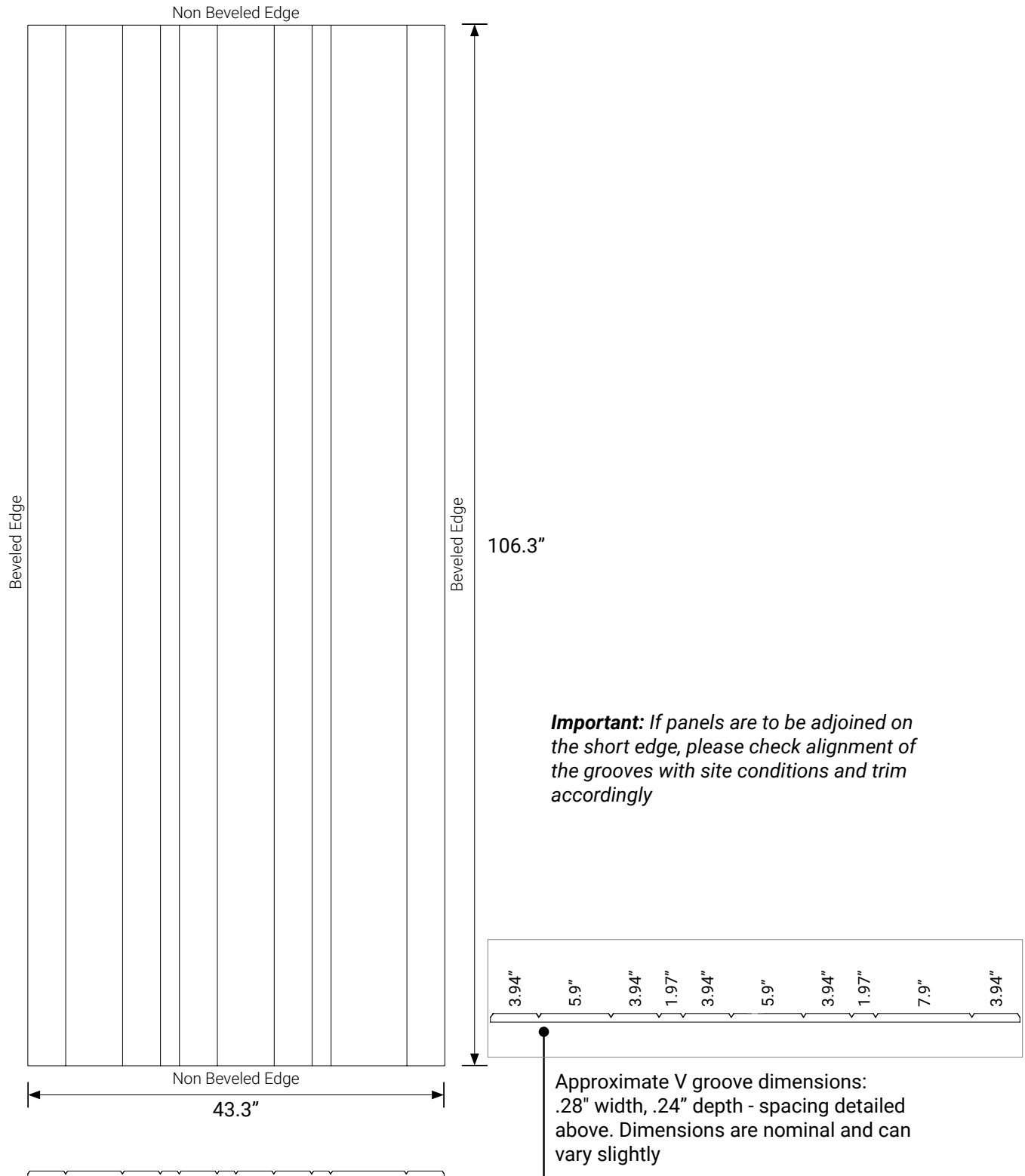
Approximate V groove dimensions:
.28" width, .24" depth @ 4.3" center to center. Dimensions are nominal and can vary slightly

Patterns shown above are not to scale
Product may vary in color due to the nature of the media
Please refer to website for current color range

ecoustic® global leaders
by INSTYLE in acoustic
products

ECOUSTIC® DUAL DESIGNS

Dual Line Mix

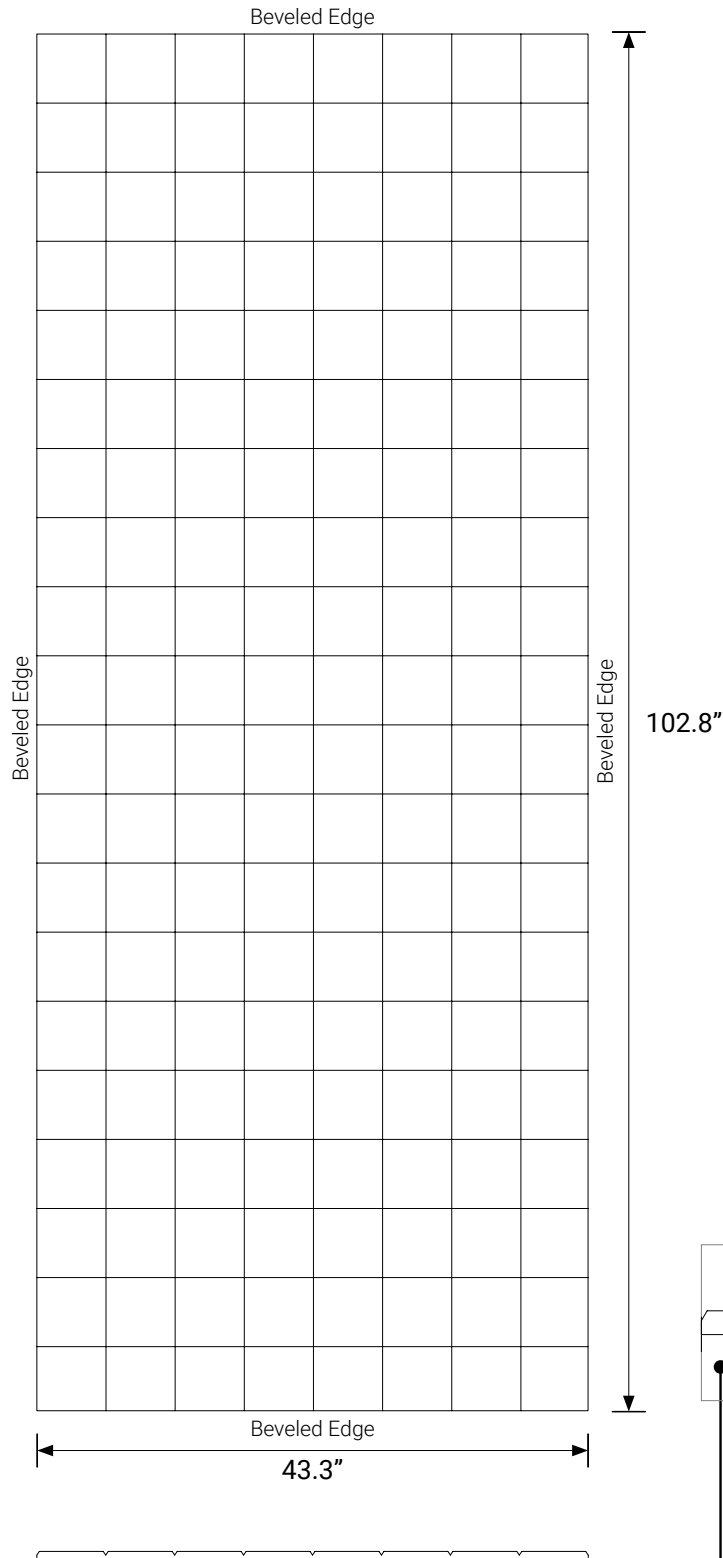


Patterns shown above are not to scale
Product may vary in color due to the nature of the media
Please refer to website for current color range

ecoustic® global leaders
by INSTYLE in acoustic
products

ECOUSTIC® DUAL DESIGNS

Dual Check 138



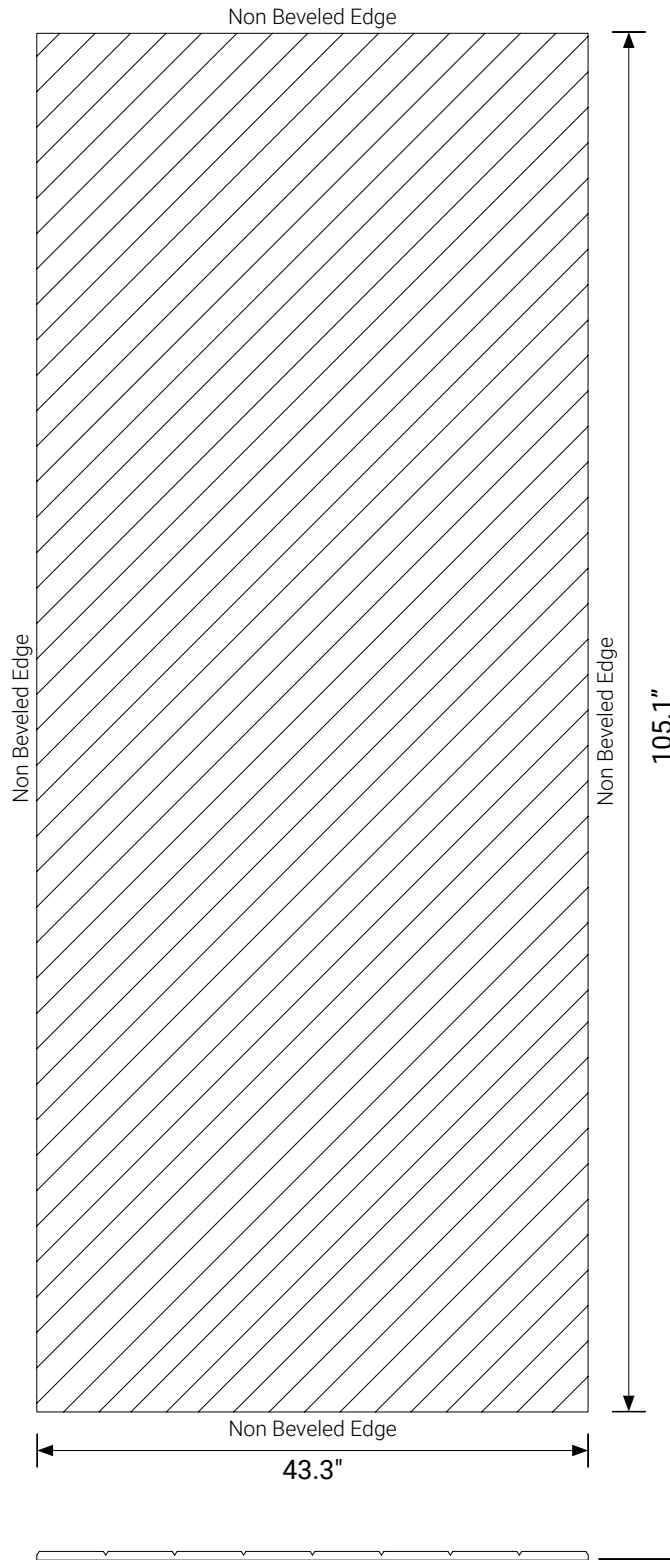
Important: If panels are to be adjoined on the short edge, please check alignment of the grooves with site conditions and trim accordingly

Patterns shown above are not to scale
Product may vary in color due to the nature of the media
Please refer to website for current color range

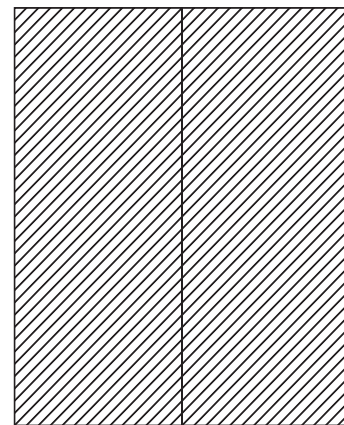
ecoustic® global leaders
by INSTYLE in acoustic
products

ECOUSTIC® DUAL DESIGNS

Dual Diagonal 55



Important: If panels are to be adjoined on the short edge, please check alignment of V grooves with site conditions and trim accordingly

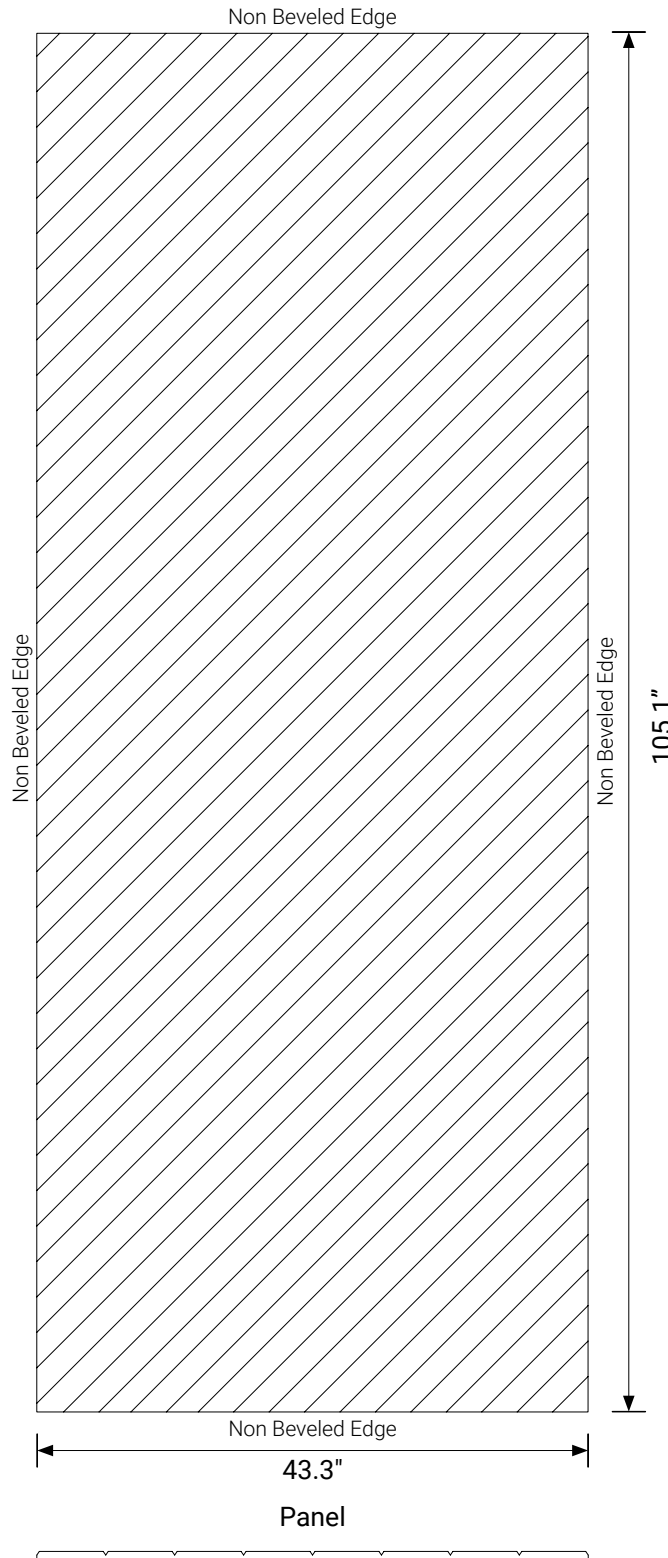


Patterns shown above are not to scale
Product may vary in color due to the nature of the media
Please refer to website for current color range

ecoustic® global leaders
by INSTYLE in acoustic
products

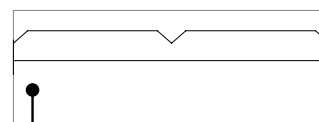
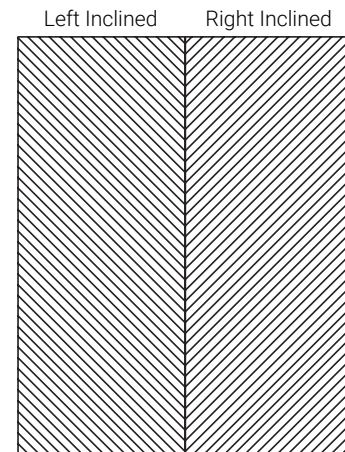
ECOUSTIC® DUAL DESIGNS

Dual Chevron 55



Important: If panels are to be adjoined on the short edge, please check alignment of V grooves with site conditions and trim accordingly

Chevron Pattern: Please specify the quantity of panels to be inclined right (Min qty 2 panels) + quantity of panels to be inclined left (Min qty 2 panels)



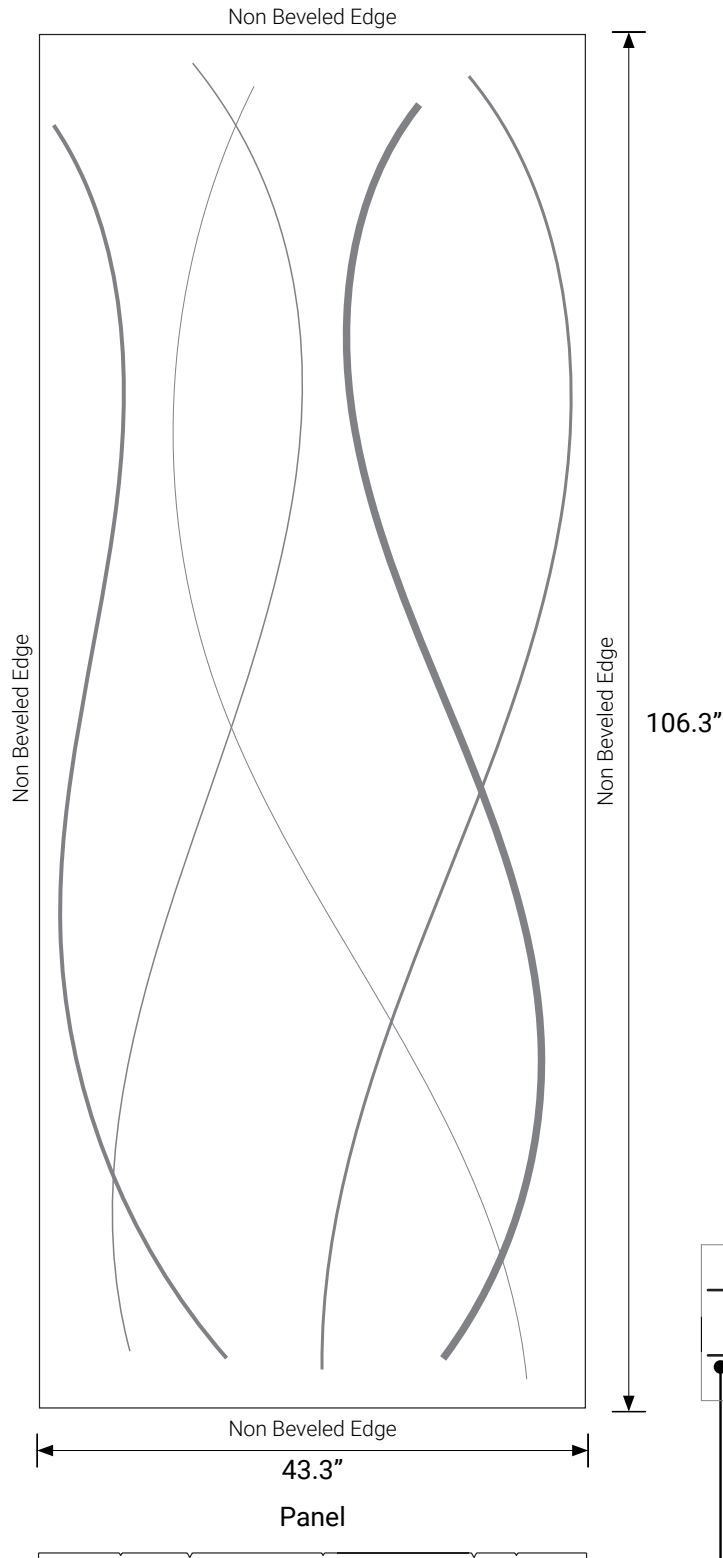
Approximate V groove dimensions:
.28" width, .24" depth @ 2.2" center to center. Dimensions are nominal and can vary slightly

Patterns shown above are not to scale
Product may vary in color due to the nature of the media
Please refer to website for current color range

ecoustic® global leaders
by INSTYLE in acoustic
products

ECOUSTIC® DUAL DESIGNS

Wave



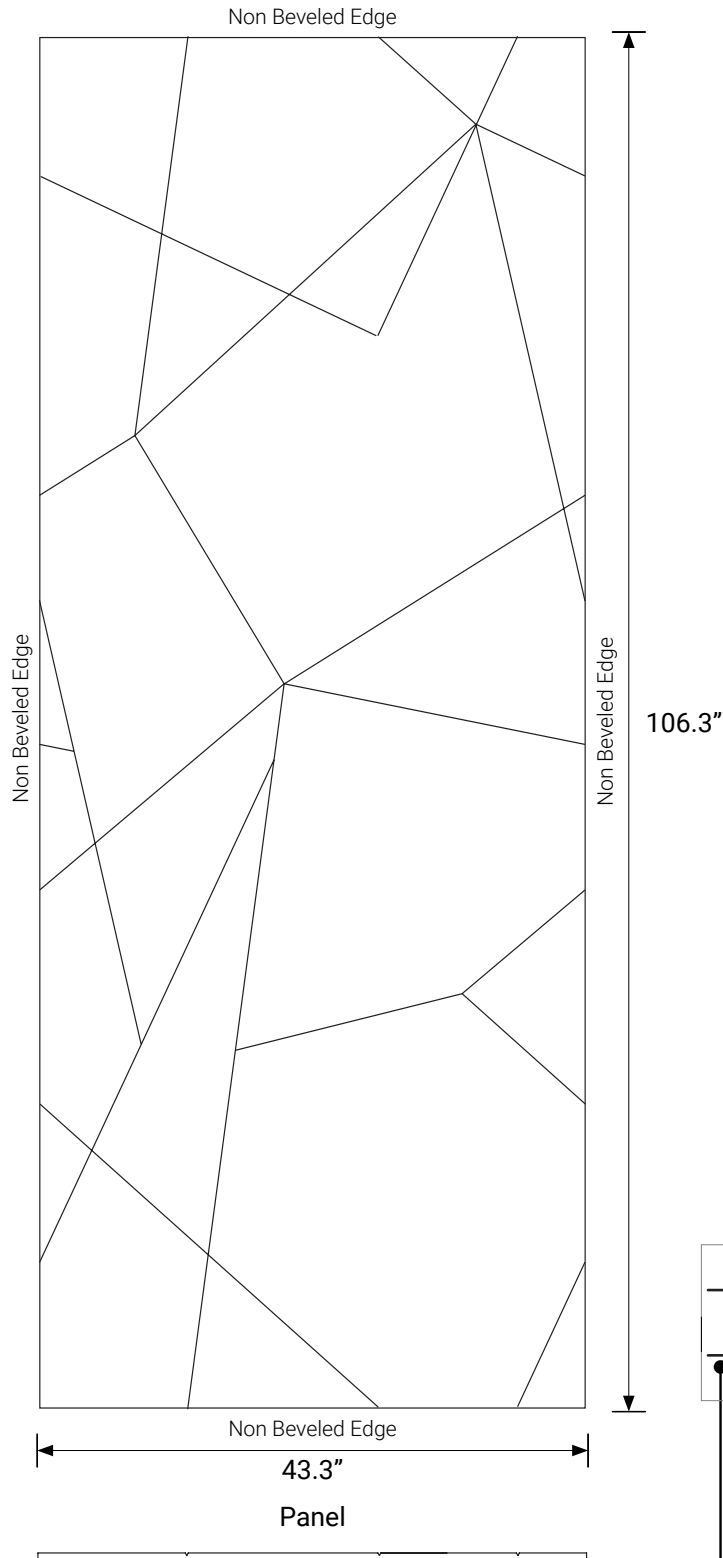
Important: *If panels are to be adjoined on the short edge, please check alignment of V grooves with site conditions and trim accordingly*

Patterns shown above are not to scale
Product may vary in color due to the nature of the media
Please refer to website for current color range

ecoustic® global leaders
by INSTYLE in acoustic
products

ECOUSTIC® DUAL DESIGNS

Pivot



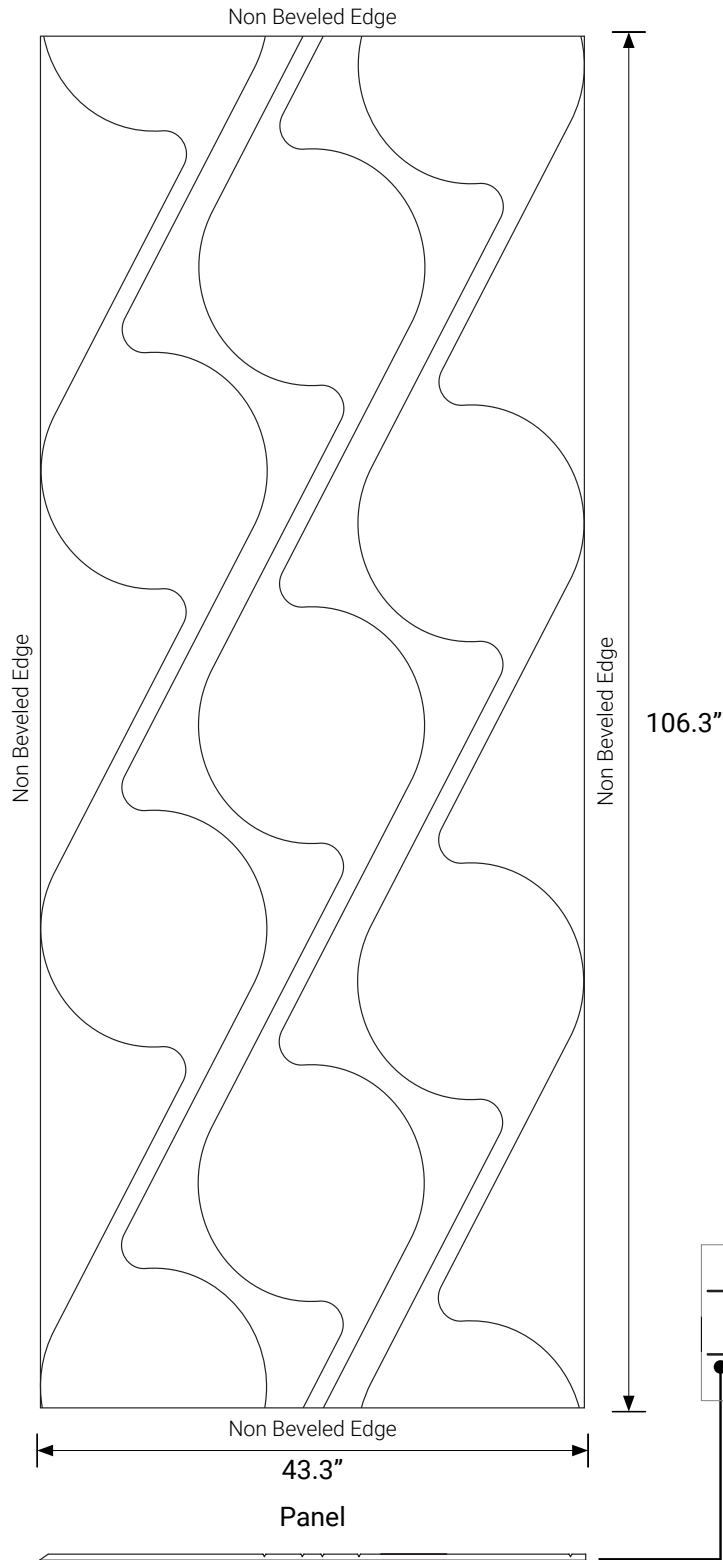
Important: *If panels are to be adjoined on the short edge, please check alignment of V grooves with site conditions and trim accordingly*

Patterns shown above are not to scale
Product may vary in color due to the nature of the media
Please refer to website for current color range

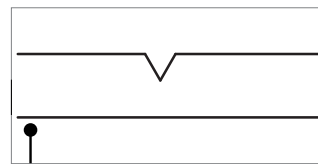
ecoustic® global leaders
by INSTYLE in acoustic
products

ECOUSTIC® DUAL DESIGNS

Twist by Tom Skeeahan



Important: *If panels are to be adjoined on the short edge, please check alignment of V grooves with site conditions and trim accordingly*



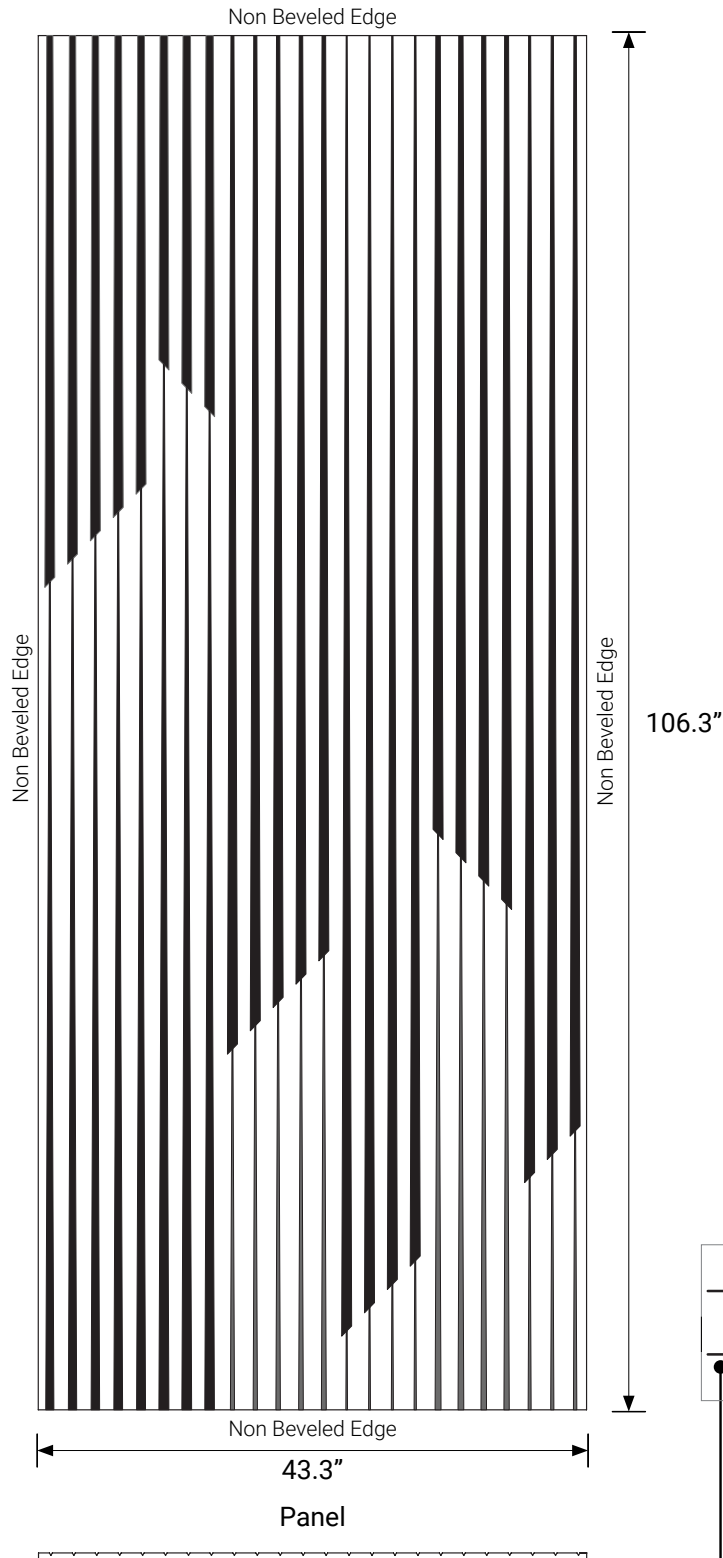
V groove dimensions are nominal and can vary

Patterns shown above are not to scale
Product may vary in color due to the nature of the media
Please refer to website for current color range

ecoustic® global leaders
by INSTYLE in acoustic
products

ECOUSTIC® DUAL DESIGNS

Rain by Adam Cornish



Important: *If panels are to be adjoined on the short edge, please check alignment of V grooves with site conditions and trim accordingly*

V groove dimensions are nominal and can vary

Patterns shown above are not to scale
Product may vary in color due to the nature of the media
Please refer to website for current color range

ecoustic® global leaders
by INSTYLE in acoustic
products

ECOUSTIC® DUAL FACE COLOR

Select a face color from (39) options of Ecooustic® Felt:



AQUA



ARCTIC



AUBERGINE



BALTIC



BERRY



CAMEO



CAPER



CHARCOAL



COBALT



CREAM



DOVE



FIELD



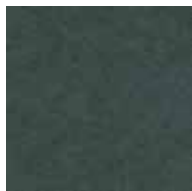
FOSSIL



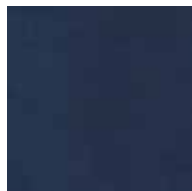
FRESCO



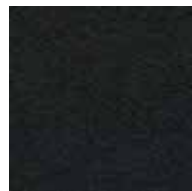
GREEN



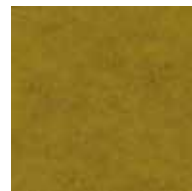
HUNTER



INDIGO



JET



LEMON



LIGHT GREY



LIME



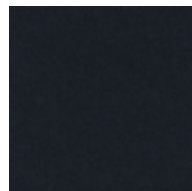
LUNAR



MICA



NATURAL



NAUTICAL



OATMEAL



OPAL



ORANGE



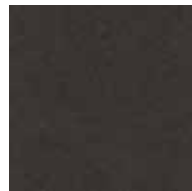
OYSTER



PAPRIKA



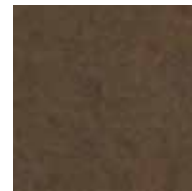
PEWTER



QUARTZ



RED



SEPIA



SKY



SPRAY



TAUPE



VAULT



YELLOW

Product may vary in color due to the nature of the media
Please refer to website for current color range

ecooustic® global leaders
by **INSTYLE** in acoustic
products

ECOUSTIC® DUAL BASE COLOR



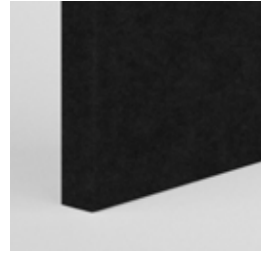
ALMOND



ATOM



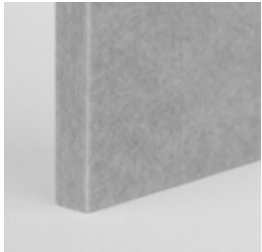
AZURE



CAVE



CIRRUS



COOL



DENIM



ECRU



FAWN



GALAXY



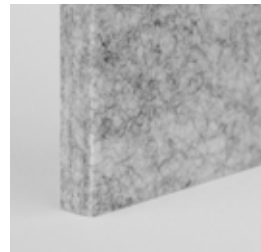
HORIZON



ISLE



OLIVE



OXIDE



SNOWDROP



TRUFFLE



TUNGSTEN

Product may vary in color due to the nature of the media
Please refer to website for current color range

ecoustic® global leaders
by INSTYLE in acoustic
products

ECOUSTIC® DUAL PANEL COLLECTION



CONTENT	100% PET
DIMENSIONS	Refer to previous pages for complete breakdown of each pattern
APPLICATION	Wall
FIRE RATINGS	Class C
ASTM E84	
AS/NZS 1530.3	
AS/ISO 9705	
ACOUSTIC	NRC- 0.40 with direct fix NRC- 0.75 with 2" airgap (Test results are based on Dual Line 25, graph can be seen on following page)
CUSTOM	Ecoustic® Dual panels are available in eight patterns. Custom patterns are available, please contact Unika Vaev customer service for more information regarding custom pattern creation.

Designed for the Environment:

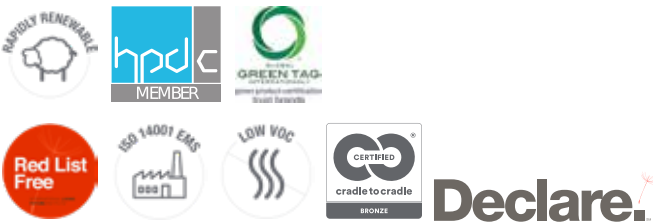
- Rapidly Renewable Content
- Prop 65 Compliant
- Low VOC
- Declare Compliant
- Red List Compliant
- Greentag Level A Certified
- HPD
- No FR Additives or Conflict Minerals
- ISO 14001-certified EMS
- The Solid Core material used to produce Ecoustic® Dual are Cradle to Cradle - Bronze certified

Moisture Absorption: After four days at 50°C, 95% RH the moisture absorbency of SC Panel base was less than 0.3% and 2.9% by weight respectively. As Dual panels are made from 100% polyester, they will not degrade over time due to moisture, mildew, or rot in office environments.

Toxicity: Polyester is non-toxic and is classed the same as wood under the State of New York Article 15 Part 1120. Ecoustic® Dual does not contain any Red List Chemicals (USA EPA).

Building Rating Systems: Ecoustic® Dual will contribute the following points for Green Star, LEED + WELL building standards.

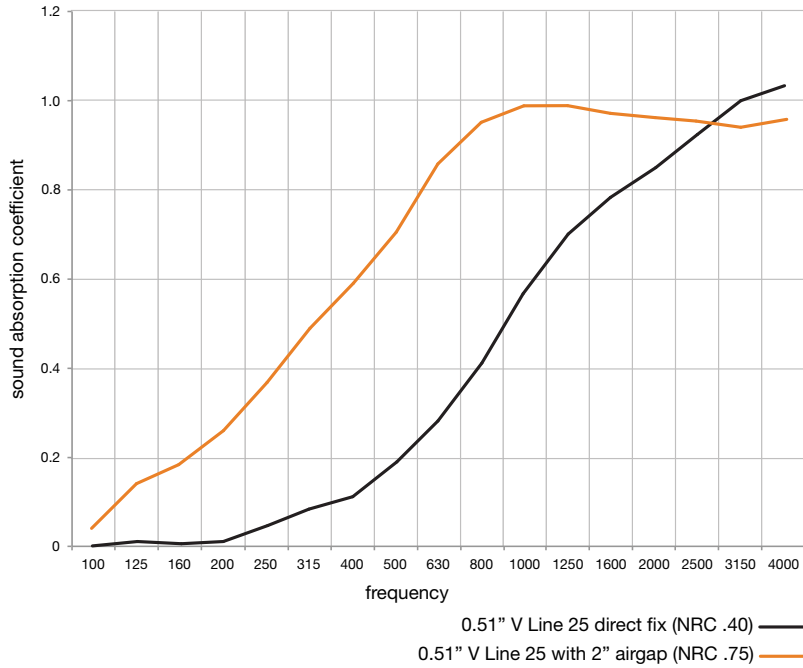
Criteria	Green Star	LEED	WELL
Low VOC	✓	✓	✓
3rd Party Certification	-	✓	N/A
Toxic Material Reduction	N/A	N/A	✓
Manufacturer Certified EMS	✓	✓	N/A



Product may vary in color due to the nature of the media
Please refer to website for current color range

ecoustic® global leaders
by INSTYLE in acoustic products

ECOUSTIC® DUAL PANEL ACOUSTIC



Acoustic Performance

Based on Ecoustic® Dual Panel test results in accordance with AS/ISO 354

NRC- 0.40 (V Line 25 / Direct Fix)

NRC- 0.75 (V Line 25 with 2" Airgap)



Product may vary in color due to the nature of the media
Please refer to website for current color range

ecoustic® global leaders
by INSTYLE in acoustic
products